

Aspect ISR Q-CARD



WARNING! Read operator manual prior to use

SETUP/PATIENT PREPARATION:

Moving table (NEVER WITH PATIENT ON BOARD):

- 1) Unlock Rear Casters using Caster Lock Pedal.
- 2) Unlock Front Steering using Front Steer Lock Pedal.
- 3) Position table to desired location.
- 4) Secure table mobility by locking Casters and front steering using Rear Caster Lock Pedal and Front Steer Lock Pedal.

AC Power:

- 5) Plug power cord into properly grounded outlet.
- 6) Protect power cord from damage by casters or other equipment.

Controls:

- 1) Emergency Stop Pushbutton disables all tabletop motion control when engaged.
- 2) If tabletop motion controls fail to operate, make sure that the Emergency Stop Pushbutton is NOT pushed in.

BATTERY OPERATION (DC POWER):

- 1) The table is FULLY functional, but motions are slower.
- 2) Connect to AC power for a minimum of 8 hours daily to ensure a proper battery charge.
- 3) Failure to push in Emergency Stop Pushbutton when table is not in use and not connected to AC power for longer than 72 hours, may result in permanent damage to the batteries.



CPR:

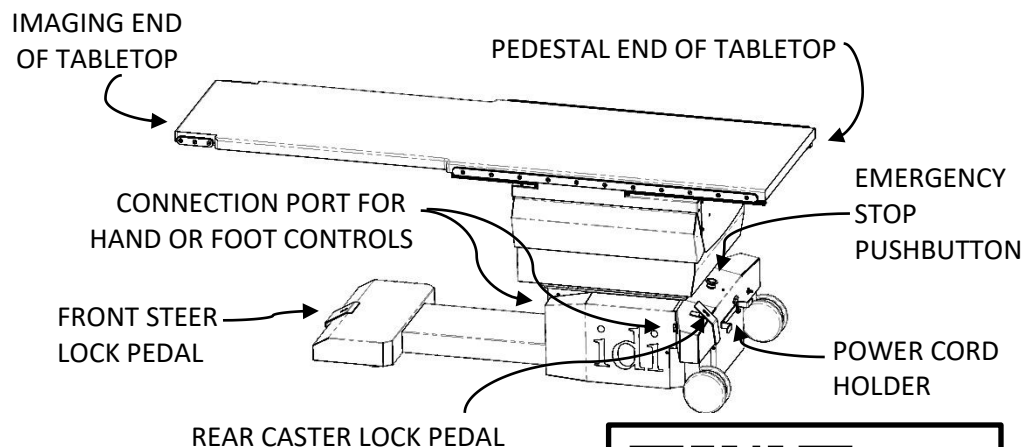
Return table to level, retract tabletop to minimize overhang and lower table position to a comfortable height to perform CPR.

BRAKES:

The ISR table braking system utilizes a passive magnetic brake; it remains engaged in the event of a complete loss of electrical power. Power is necessary to release brakes.

Braking force is limited by the magnet strength. Use caution when applying pressure to the side of the table as the brakes may be overcome if more than 50 pounds of force is applied.

To reduce potential motion during patient transfers with larger patients, release the table brake and move the top in the direction the patient will be pulled during loading or unloading until the tabletop transverse travel limit is reached. Release the panning handle to re-engage the lock and then transfer the patient.



CLEANING AND STORAGE:

- 1) Unplug power cord and wrap it around the cord holder.
- 2) Push in Emergency Stop Pushbutton.
- 3) Lock rear casters and front steering.
- 4) Clean and disinfect table.



Scan to
Access
User
Manuals
Online

Aspect ISR Q-CARD

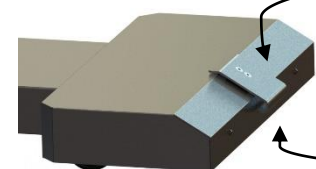
LOCK

PRESS FORWARD ON TOP HALF OF PEDAL TO LOCK ALL MOVEMENT



UNLOCK

PRESS DOWN ON BOTTOM HALF OF PEDAL TO ALLOW REAR CASTERS TO SWIVEL FREELY



CASTER LOCK/STEER PEDAL POSITIONS

STEER LOCK

PRESS DOWN ON PEDAL TO RESTRICT FRONT MOVEMENT TO FORWARD AND BACKWARDS ONLY

FLOAT POSITION

PULL UP ON PEDAL TO ENABLE MOVEMENT OF FRONT IN ALL DIRECTIONS

TABLETOP MOTION CONTROL PANHANDLE

PANHANDLE KNOB/ TABLETOP FLOAT BRAKE
(Lift underside of Panhandle Knob to float tabletop. It will not operate if tabletop is not level)



ELEVATE SWITCH

(Green light to right of Tabletop Float Brake indicates tabletop is centered on the base laterally)

TRENDELBURG SWITCH

(Green light to right of switch indicates tabletop is level for this motion)

Green light to right of switch indicates tabletop is level for this motion)

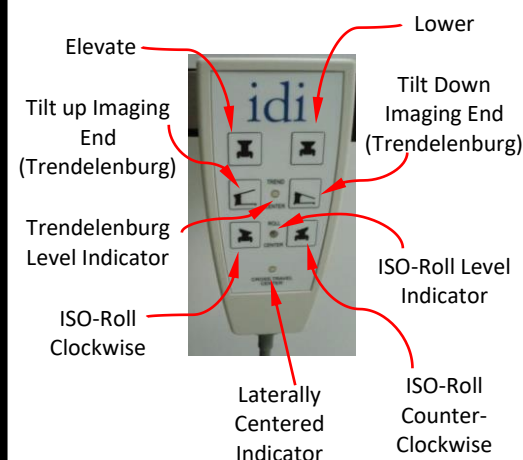
ISO-ROLL SWITCH



EMERGENCY STOP PUSHBUTTON

- PUSH IN to stop **ALL** tabletop motion.
- TWIST to reset.

Tabletop Motion Handset Control



It is recommended that the pendant control be disconnected during critical procedures to prevent inadvertent operation or motion, causing patient injury.



Patients must be loaded from the side of table. Tilting or instability may occur if patient is loaded onto the pedestal end of table or the imaging end of the table.