

idi

Image Diagnostics, Inc.

Manufacturers of Quality Medical Products

Connexus



Installation Manual

The text of this manual was originally written, approved and published by the manufacturer in English.

Made in the USA

L280-0920 REV A

Table of Contents

1. SYMBOL IDENTIFICATION..... 1

2. SAFETY INSTRUCTIONS 2

3. CONNEXUS LAYOUT 3

 3.1. Connexus Layout Planning 3

4. CONNEXUS WALL MOUNTING INSTRUCTIONS 4

 4.1. Connexus Box Installation 4

 Installation Contents 4

 Tools Required for Mounting 4

 Wall Mounting Instructions 5

5. CONNEXUS MOUNTING TEMPLATE..... 9

1. SYMBOL IDENTIFICATION



Attention! Consult accompanying documents.
Failure to follow these instructions could cause serious personal injury or damage to equipment.



Warning! Information or instructions shown near this symbol must be adhered to in order to prevent a potentially hazardous situation which if not avoided, could result in death, personal injury or damage to the equipment.



Electric Shock hazard. Information or instructions shown near this symbol must be adhered to in order to prevent a potentially hazardous situation which if not avoided, could result in death, personal injury or damage to the equipment.



Recyclable material.



Presence of non-ionizing electromagnetic radiation.



Model of Connexus.



Serial Number of Connexus.



Date of manufacture of the device.



Location where device was manufactured.

2. SAFETY INSTRUCTIONS



Review the SAFETY HAZARDS and OPERATING INSTRUCTIONS before operating video transmission unit

- ✓ All persons using this equipment must fully understand its operation instructions, emergency procedures, capabilities be aware of all potential safety hazards.
- ✓ This manual should be accessible to all personnel installing, operating, or servicing this equipment.
- ✓ Only a qualified technician may install or service this equipment.



Failure to follow safety precautions may result in serious injury to patient or user or damage to equipment.

Comments and questions regarding safety should be addressed to:



Customer Support
Image Diagnostics, Inc.
310 Authority Drive
Fitchburg, MA 01420 USA

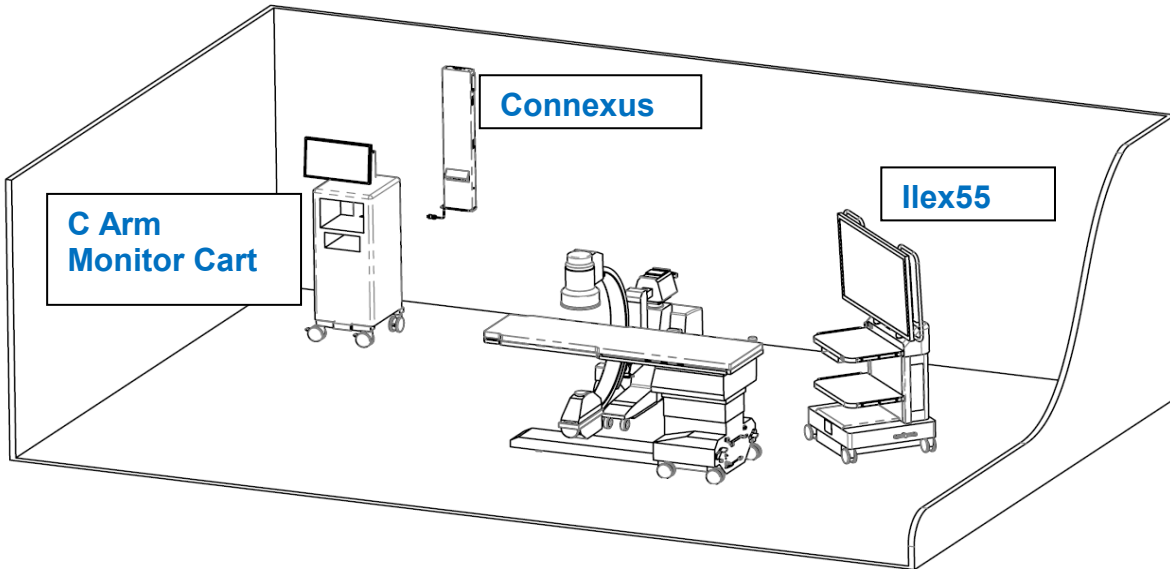


Or call IDI at (978) 829-0009 or Toll Free (877) 304-5434.
The fax number for IDI is (978) 829-0027.

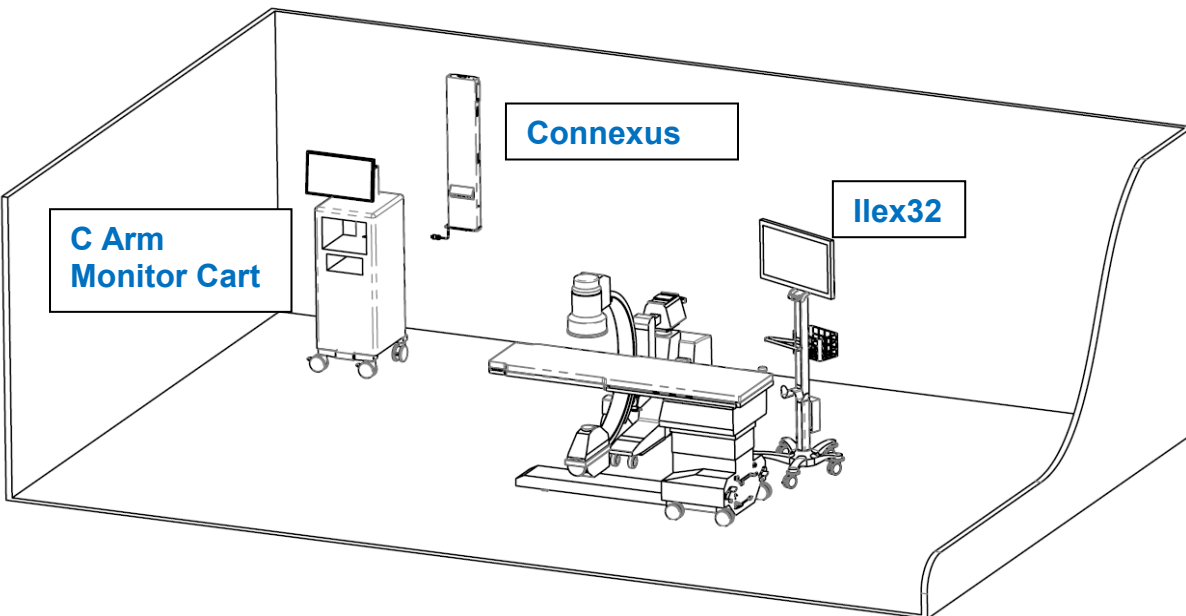
3. CONNEXUS LAYOUT

3.1. Connexus Layout Planning

1. Typical Layout using a Connexus Video System with an ilex55. For additional layouts please contact your IDI sales representative.



2. Typical Layout using a Connexus Video System with an ilex32. For additional layouts please contact your IDI sales representative.



3. Determine the location for the wall mounted unit and the required monitors to match with the Connexus system.

4. CONNEXUS WALL MOUNTING INSTRUCTIONS

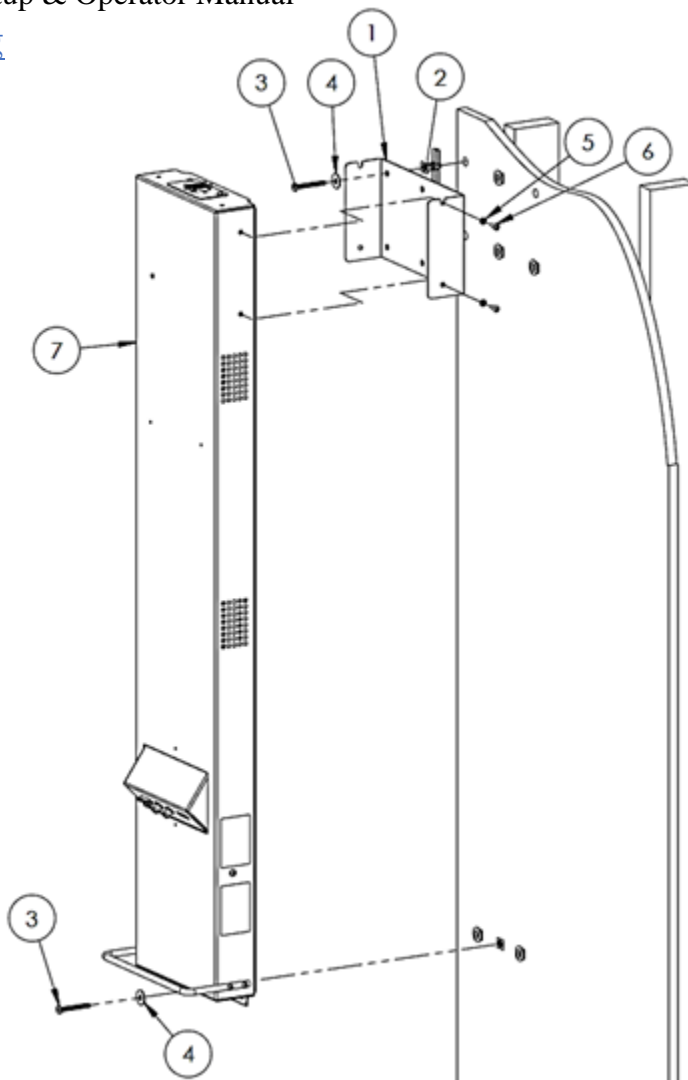
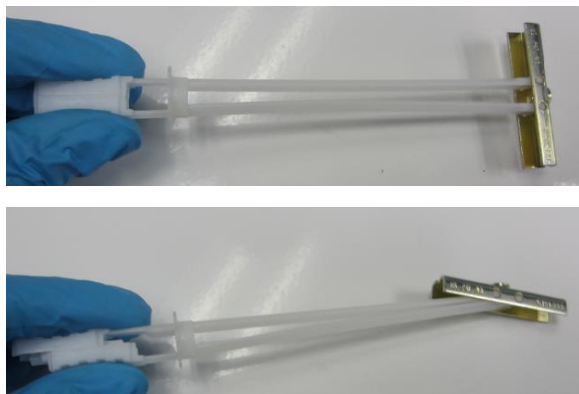
4.1. Connexus Box Installation

Installation Contents

1. Wall Mounting Bracket – Qty of 1
2. Toggle Anchor, 1/4-20 – Qty of 10 (see image below)
3. Pan Head Bolt, 1/4-20 x 2" Length – Qty of 10
4. Washer 5/16" ID – Qty of 10
5. Nylon Washer, #8 – Qty of 4
6. Button Head Screw, 10-32 thread x 1/2" Length – Qty of 4
7. Connexus Main Assembly
8. L280-0920 --- Connexus Installation Manual
9. L280-0939 --- Connexus Installation Template
10. L280-0922 --- Connexus Setup & Operator Manual

Tools Required for Mounting

1. Electric Drill
2. Level
3. 1/2" Drill bit
4. #2 Phillips Screwdriver
5. Center Punch
6. Marker
7. Thumb Tack/Push Pin/Tape
8. Tape Measure
9. 1/8" Allen Wrench



Wall Mounting Instructions

1. Review recommended layouts for Connexus system. A drilling template, IDI drawing #L280-0939, is supplied in the installation kit.



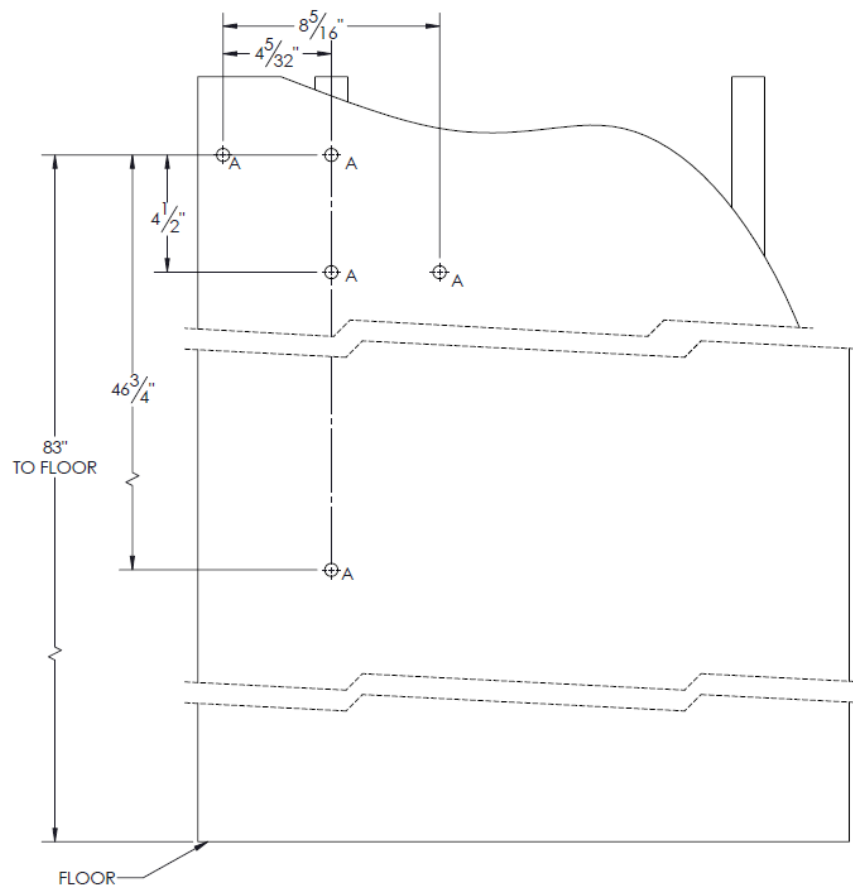
Warning – The wall that the Connexus system is being mounted onto must be able to support a minimum of 100 lbs. (45kg).

2. Determine location of the Connexus wall unit. Unit overall dimensions are 10.5" W x 49.75"H x 6" D



Warning – before drilling verify that there are no electrical wires, network cables, plumbing or other utilities behind the designated wall.

- a. Stud mounting - the recommended mounting is to have the center of the unit over the center of a stud, as shown below. To secure the Connexus box to the wall, toggle anchors must be used in all the holes labeled "A" as shown below.

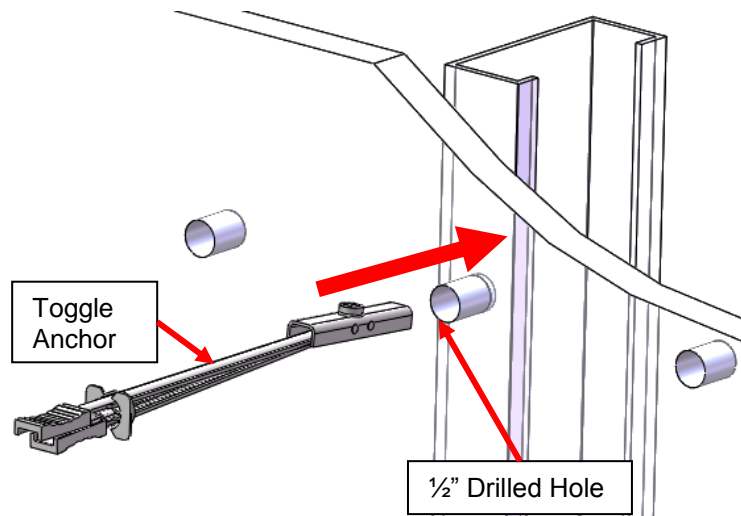
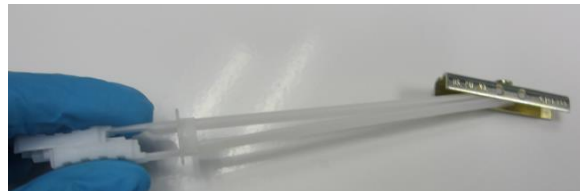


-
- Technical drawing of a building section showing a curved roof and structural details. Dimensions include 83" TO FLOOR, 46 3/4", 4 1/2", 8 5/16", 5", and 42.45. Labels include 'B' and 'FLOOR'.

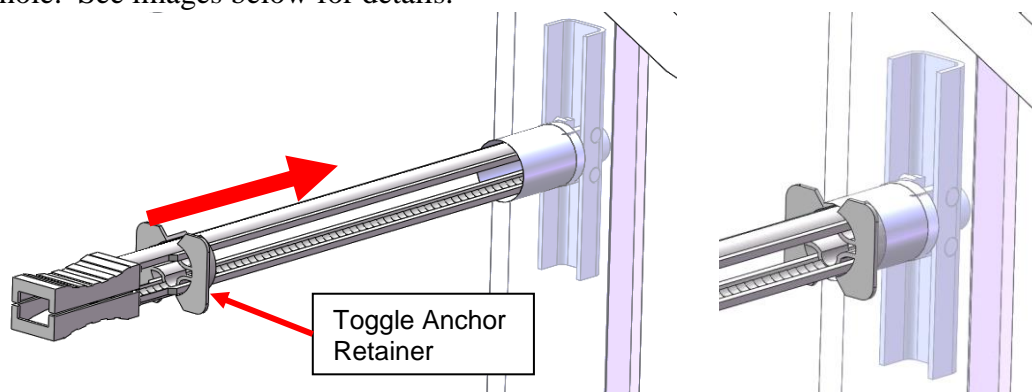
- 

3. Measure and put a “X” mark 83” from the ground, this will be the center of the mounting bracket.
4. Determine if there is a stud near this mark, verify no electrical wires, network cables, plumbing or other utilities work is behind or within 12” to the left or right of the mark. If plumbing or electrical is near the desired location, please find an alternate location to mount the Connexus unit.

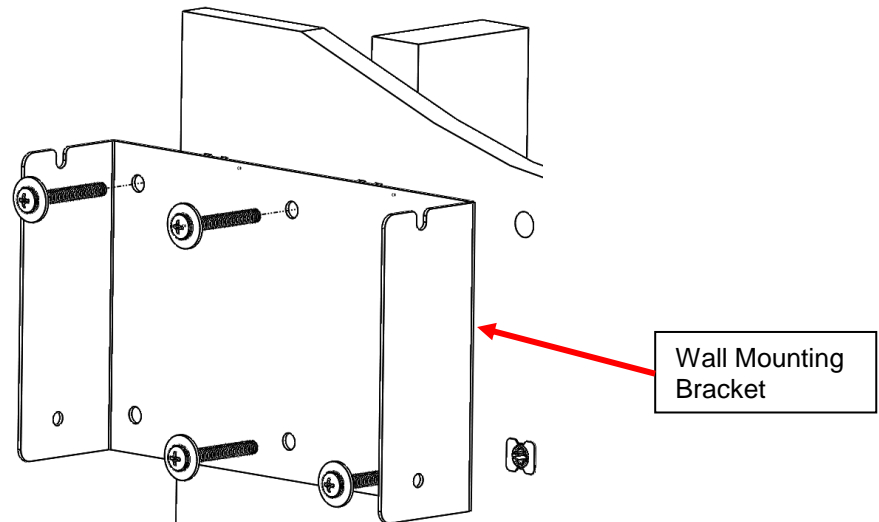
5. Secure the mounting template to the wall using a thumbtack or tape and align the “X” mark on the wall with hole labeled “start alignment here” on the template.
6. Adjust the template until the centerline is plum. Secure the template in place starting at the top. Use your hand to smooth the template out against the wall as the template is being secured in place.
7. Center punch all the center marks on the template.
8. Review the recommended mounting holes in step 2 and drill a ½” thru hole into the wall at each location, as required per the recommended mounting holes. **It is critical to keep the drill centered with the hole as close as possible. An offset drilled hole will become an issue during installation.**
9. Using your index finger and thumb, Slide the white plastic straps on the Toggle Anchors until the anchor plate is parallel to the white straps and insert into the drilled holes. See images below for details.



10. Install the Toggle Anchor into the drilled holes and verify that the anchor plate is fully inserted into the wall before sliding the white straps back to their original position where the anchor plate is perpendicular to the straps.
11. Push and slide the Toggle Anchor Retainer until it is securely against the wall, retainer will require some pressure to get started, and will fit snugly into the drilled hole. See images below for details.



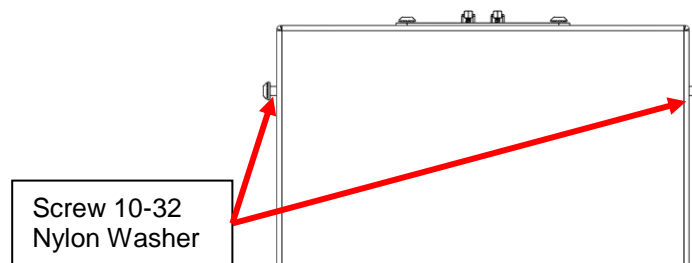
12. Break off the white straps by grabbing them close to the wall and pushing up and down on them. Repeat until all the drilled holes have been filled with the straps.
13. Install the Wall Mounting Bracket (P280-0899) by holding over the toggle anchors and inserting the 2" bolts with a washer. The slots on the mounting bracket should be facing up as shown in the image below.



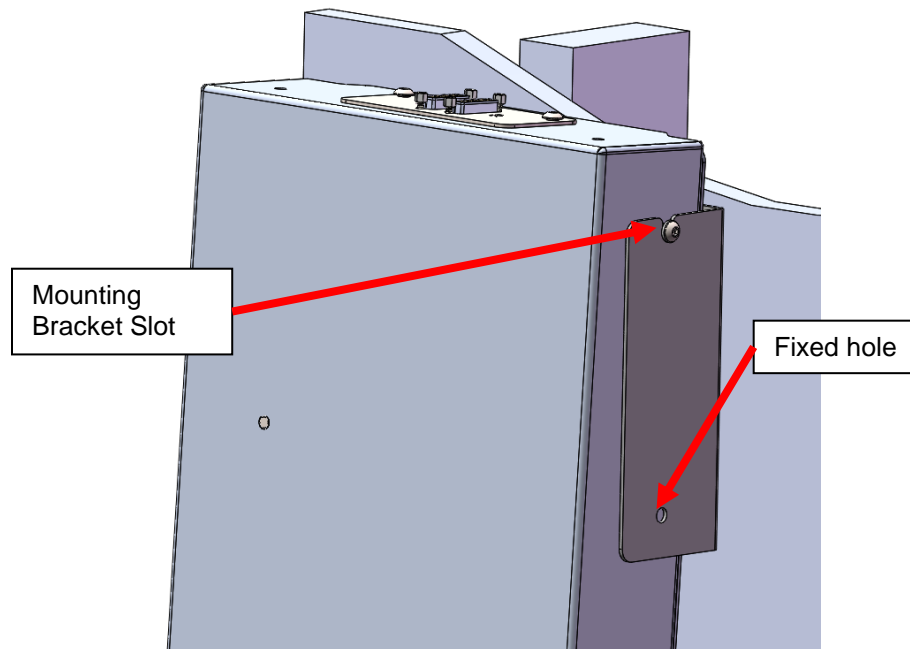
14. Install all bolts but do not fully tighten.
15. Verify bracket is level, and then fully tighten bolts.
16. Retrieve four 10-32 x 1/2" screws and install nylon washer by threading it onto each bolt.



17. Retrieve the Connexus box and insert the two 10-32 x 1/2" screws with nylon washer into the top two holes in the frame, leaving about 1/4" of space between the box and the nylon washers. See image below for details.



18. Slide the main box into the bracket, the bolts from the previous step will fit into the slots in the bracket



19. Insert two more 10-32 screws in the second set of holes (labeled fixed hole in previous step) to secure the box to the wall bracket.
20. Tighten all four 10-32 screws.
21. Install 2" Length, 1/4-20 thread bolt with washer, in the bottom of the Connexus box to secure it to the wall, non-stud mounting will require 2 bolts instead of 1.
22. Tighten all mounting bolts.
23. Double check all bolts are tightened.
24. Install DVI cables to the top of the Connexus box, and route the other end of the cable to the designated monitor.
25. Plug a hospital grade IEC 320 C/14 male female plug into the bottom of the Connexus unit, do not plug into wall outlet yet
26. Secure the power cord to the box using the cable clamp and a 10-32 screw
27. Plug the power cord into the wall outlet

5. CONNEXUS MOUNTING TEMPLATE

Refer to IDI template drawing #L280-0939 shipped with the installation kit.