

ASPECT 100UC Plus

UNCRATING INSTRUCTIONS

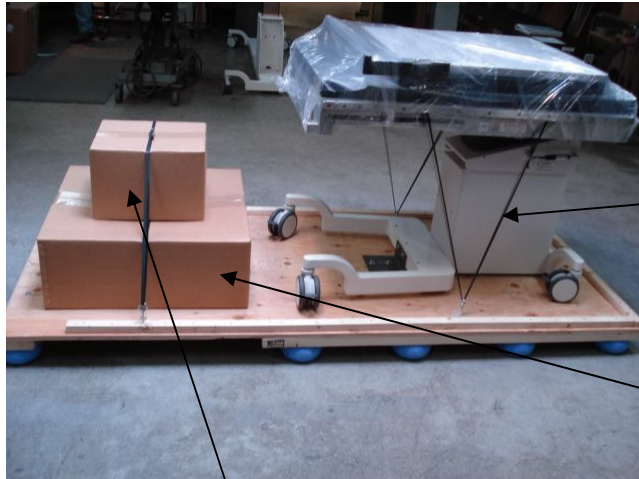


Suggested Tools

1/2" Drive Socket Wrench
with extension & 9/16"
Socket

5/32" Allen (Hex Key)
Wrench

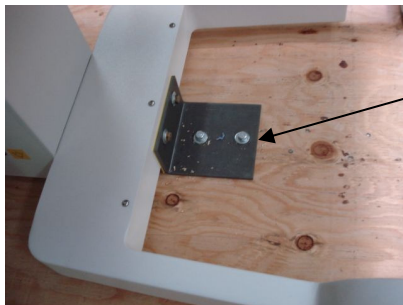
Diagonal-Cutting Pliers



1. Remove Straps.

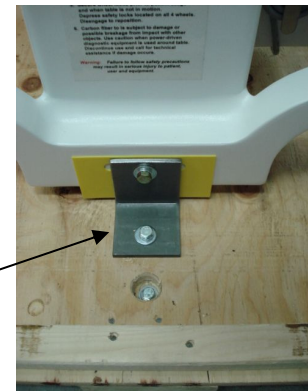
3. Remove Drain Bag Box.

2. Remove Accessories Box.



Front Shipping Bracket

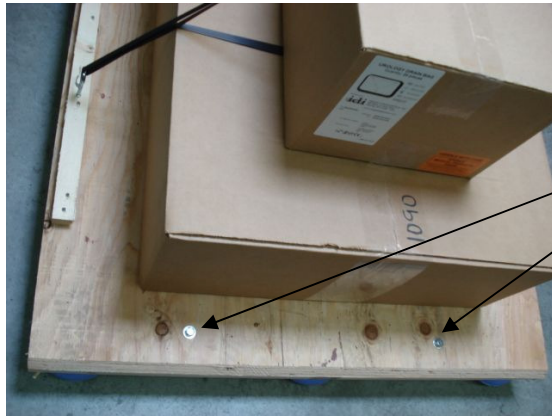
Rear Shipping Bracket



Step 4. Using a ratchet with a 9/16" socket, remove screws that attach front shipping bracket to table base.

Step 5. Remove lag bolts that attach front shipping bracket to skid.

Step 6. Remove the rear shipping bracket.

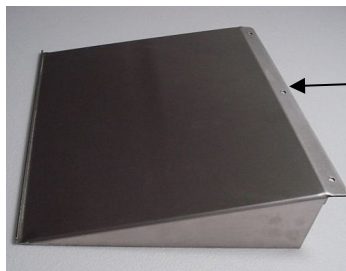


Lag Bolts Attaching Front Skid Feet

Step 7. Remove the lag bolts attaching the front skid feet to the front of the skid. (This permits wheeling the table off of the skid. The front of the skid serves as a ramp when the front feet/board is removed, allowing the skid to tilt toward the floor as the table is rolled off).

Step 8. Steer table off of skid. Wheel table toward FRONT of skid ONLY.

CAUTION: 2 people recommended – get an assistant when rolling table off of skid.



Tray

Screws



Step 8. Locate the stainless steel foot control tray in the accessories box and attach the tray to the table with 3 socket head screws using a 5/32" allen wrench. These screws will be found already inserted in the holes in the table base where the table mounts. Remove screws and reinsert to attach tray.



Tabletop Pad and
Leg Extension

Step 9. Remove the wrapping on the tabletop pad and leg extension.

For installation and accessory set-up, please follow the instructions in the Operator's Manual.