

# Ilex Q-Card



## WARNING!

Read operator manual prior to use

"ON/OFF"  
switch



Scan Here for  
Operator Manual  
Then Scroll to Ilex

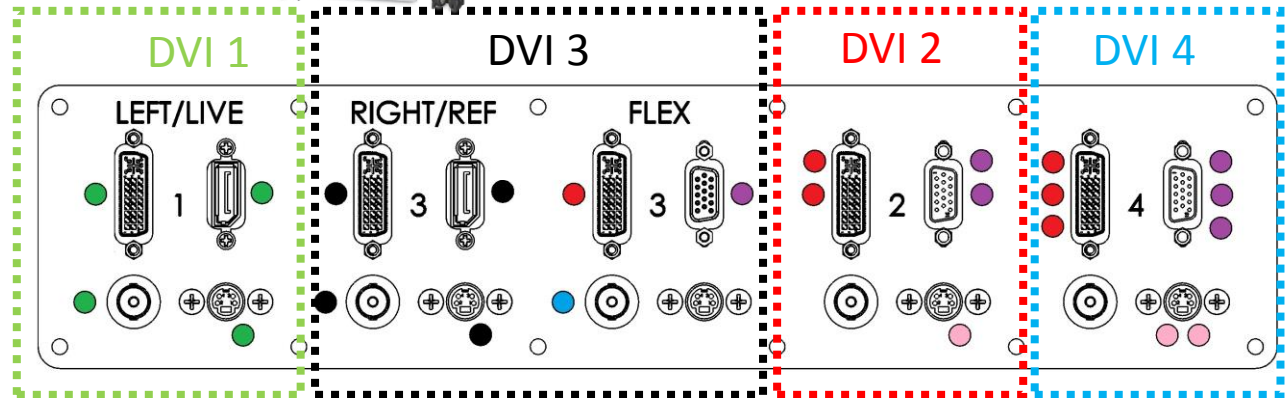


## Power On Device

Ilex unit is equipped with power cord. Plug power cord into hospital grade outlet. Press Green "ON/OFF" switch on the left side of the top shelf.

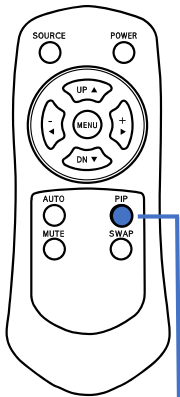
## Plug in video sources to be connected to monitor

Each video channel has a designated DVI input on the monitor. The device connected first in each channel will show on the monitor. DVI 3 utilizes the router switch. To switch between multiple inputs, see back side of Q-card.

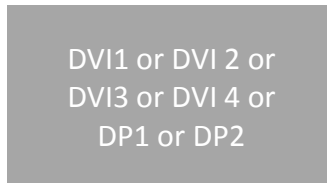


## Select Layout or "PIP Mode"

To change layouts, press PIP button on remote. Each press of the PIP button will cycle to the next layout. As shown: Single, Picture-in-Picture (PIP), Picture-by-Picture (PBP), Triple, and Quad.



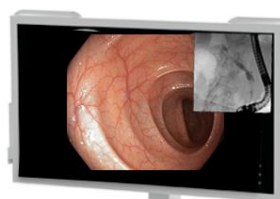
PIP Button



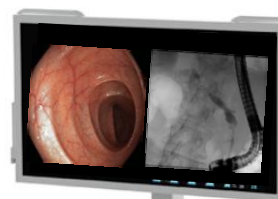
Single



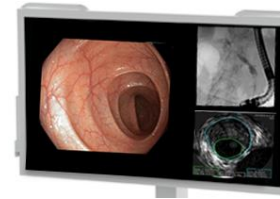
PIP



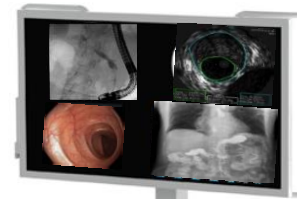
PBP



Triple

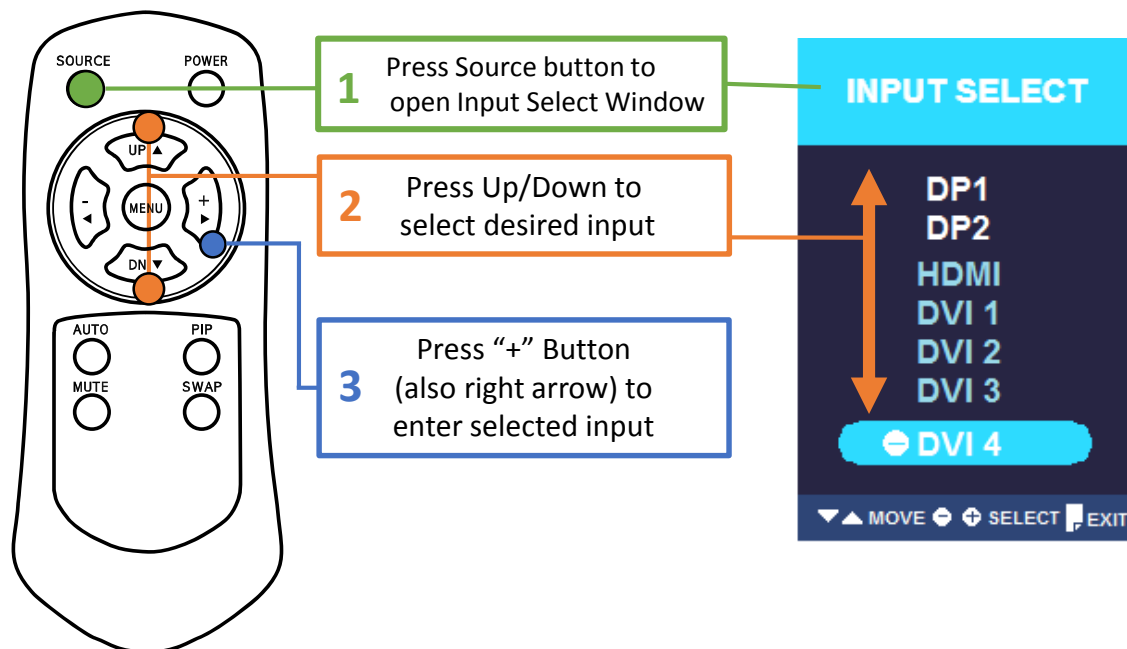


Quad

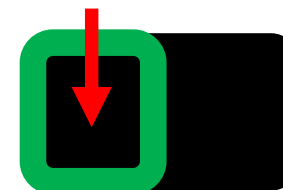


## Ilex Q-Card

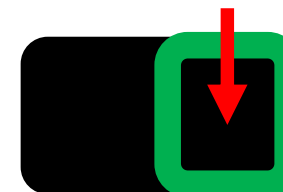
### Changing Sources



Active window will always be framed by a green boundary line, when source button is pressed



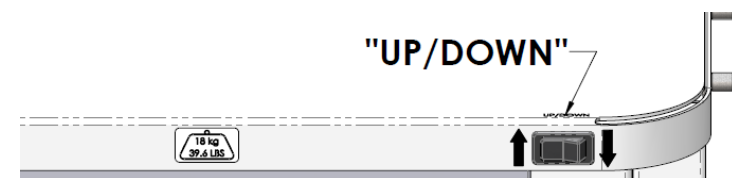
Press Source button again to switch to different active window



### Adjusting Height of the Monitor

The monitor height is adjustable.

To adjust the height, press the up or down button on the right-hand side of the top shelf.



### Router Switch Adjustments (Channel 3/DVI 3)

For channel 3, a switching router is utilized underneath the top shelf. Verify power is on when green LED light and the screen is lit up blue. Press power button if required.

**Input:** Pressing input button will change the desired input (C-arm Ref, Flex, S-Video, SDI).

**Output:** Pressing output will change the desired output resolution (1080p60, 1080p30, 720p30, SXGA).

