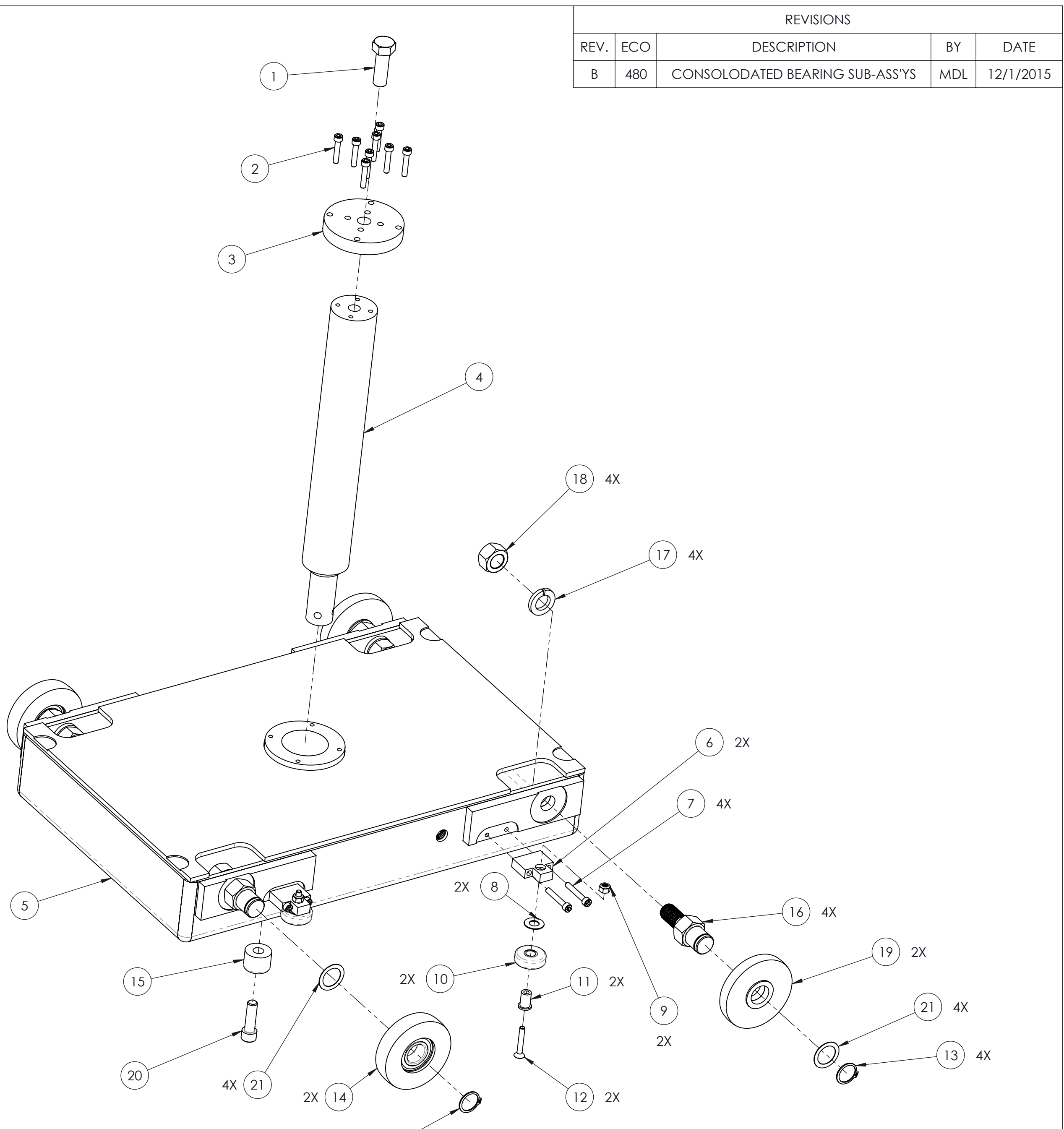


ITEM NO.	PART NUMBER	DESCRIPTION	QTY
1	HHCSZ50-20-14	SCR, HEX HD, ZP, 1/2-20 X 1-1/2, GRADE 8	1
2	HSCSA10-32-12	SCR,SHCS,ALY,#10-32 X 1	8
3	Q200-385	SUPPORT, SHAFT, 1000F (CA)	1
4	Z240-158	SHAFT, CORE, 1.75 DIA. X 13.81	1
5	P220-101	CARRIAGE ASSEMBLY 14 X 14 (PT)	1
6	Q200-384	MOUNT, GUIDE WHEEL (CA)	2
7	HSCSA10-32-13	SCR,SHCS,ALY,#10-32 X 1 1/4	4
8	C000-0068	BRG, TH, 3/8 X 3/4 X 1/32	2
9	HNUTLKNZ-08	NUT,NYLOK,#10-32	2
10	U200-671	WHEEL, GUIDE, SUB-ASSY	2
11	Z200-353	SHAFT, WHEEL	2
12	HSFHA10-32-13	SCR,SOC,FLT,ALY,#10-32 X 1 1/4	2
13	C000-0222	RING, RETAINING, .781 DIA. SHAFT	4
14	U240-1300	WHEEL, RAIL, SUB-ASSY	2
15	Q240-1144	HARD STOP, ROTATION, MOVEABLE (CA)	1
16	Q240-878	SHAFT, WHEEL, Ø.79, FLANGED BRG	4
17	HWSHRLSPZ-10	WSHR,LCK,SPL,ZP,5/8	4
18	HNUTHEXZ-20	NUT, HEX, ZP, 5/8-18	4
19	U240-1301	WHEEL, RAIL, DBL BEARING, SUB-ASSY	2
20	HSCSA38-16-13	SCR,SHCS,ALY,3/8-16 X 1 1/4	1
21	C000-0546	SHIM, 20mm X 28mm X .5mm, SST	4



REVISIONS				
REV.	ECO	DESCRIPTION	BY	DATE
B	480	CONSOLODATED BEARING SUB-ASS'YS	MDL	12/1/2015

NOTE:  
1. USE LOCTITE 242 ON ALL THREADED FASTENERS.

<small>THIS DRAWING AND ALL INFORMATION CONTAINED HEREIN IS THE PROPERTY OF IMAGE DIAGNOSTICS, INC. AND IS NOT TO BE DISCLOSED, REPRODUCED OR USED FOR MANUFACTURE WITHOUT ITS PRIOR WRITTEN AUTHORITY</small> Copyright © 11/3/2015 IDI		<b>TITLE</b> CARRIAGE W/STOP 14 X 14, 1000F, ASSEMBLY	
<b>TOLERANCES UNLESS OTHERWISE SPECIFIED</b> FRACTION = ± 1/32 DECIMAL .XX = ± .01 DECIMAL .XXX = ± .005 ANGULAR = ± 1°		<b>MATERIAL</b> 47.57lbs.	
DRAWN BY <b>MDL</b>		NEXT LEVEL	
APPROVED BY _____ DATE _____		SHEET 1 OF 1 SCALE 1:3	
<b>Image Diagnostics Inc.</b>		SIZE DWG NO.	
310 Authority Drive Fitchburg, MA 01420		C A220-217	
			REV <b>B</b>