

ACCESSORIES CATALOG

Smarter Practico

Surgical Table



INTELLIGENT DESIGN ► TANGIBLE OUTCOMES

idi
imagediagnostics.com

idi
imagediagnostics.com



Operating table accessories represented in this brochure are manufactured or distributed by Image Diagnostics Inc. in partnership with Merivaara.

This comprehensive selection of accessories is designed to complement Merivaara Smarter Practico operating table in a variety of surgical procedures.

When equipped with these high-quality accessories the tables are also suitable for many specialized procedures. The safe and easy fixing and ergonomic design ensure a smooth surgical process with less time demands.

All materials used have been carefully selected. The soft, body conforming surfaces provide comfort and safety for the patient, as well as meeting surgical requirements.



Find us on LinkedIn
[Image Diagnostics, Inc.](#)
[Merivaara Corp.](#)



CONTENT

Page

Clamps

[4-5](#)

Head rests

[6-8](#)

Arm & Hand rests

[9-11](#)

Uro/Gyn Accessories

[12-13](#)

[Leg & Footrests](#)

[14-15](#)

Pads & Mattresses

[16](#)

Supports & Straps

[17-18](#)

Patient Positioning Solutions

[19](#)

Anaesthesia screens and infusion rods

[20](#)

Other accessories

[21-22](#)

Why IDI?

[Back](#)
[page](#)



1. SIMPLE CLAMP C100-3046

Accommodates a round accessory post. All metal design clamp mounts and locks anywhere on standard OR table rail. Autoclavable.



3. SNAP-ON SOCKET C000-0746

Accommodates a round accessory post. Quickly snaps onto rail and pull bottom lever to release. Mounts and locks anywhere on standard OR table rail. Lithotomy wheel for accessory angle adjustments.



2. SNAP-ON BLADE CLAMP C100-3043

Accommodates a blade-style accessory post. Quickly snaps onto rail, push button to release clamp. Mounts and locks anywhere on standard OR table rail. Prevents false rail engagement. Autoclavable.



4. SIMPLE BLADE CLAMP C000-1115

Accommodates blade-style accessory post. Mounts and locks anywhere on standard OR table rail ends or at rail notches. A cost-effective solution.

ALL CLAMPS FIT U.S. RAILS



5. ACCESSORY CLAMP C100-3367 UNIVERSAL

Designed to mount round bar accessories vertically and flat bar accessory bars horizontally, perfect for infusion stand and/or extension rails.

- Size 40 x 150 x 80 mm (1.6 x 5.9 x 3.1")
- Accessory rod diameter Ø 16 mm and 10 x 25 mm (0.6" and 0.4 x .9")
- Aluminium



6. RADIAL CLAMP C100-3396

Radial clamp rotational for round bar compatible accessories.

- Size 60 x 160 x 110 mm (2.4 x 6.3 x 4.3")
- Accessory rod diameter Ø 16–20 mm (.6 x .8")

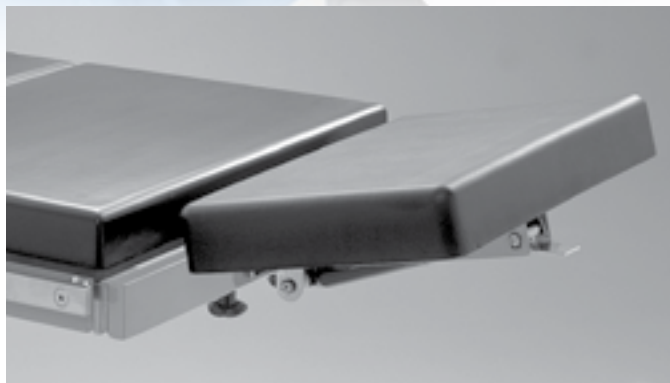


7. RADIAL ACCESSORY CLAMP C100-3386

Radial clamp with for round bar accessories, perfect solution for anaesthesia screens, infusion rod.

- Size 110 x 160 x 100 mm (4.3 x 6.3 x 4")
- Accessory rod diameter Ø 16–20 mm (.6 X .8")
- Stainless steel

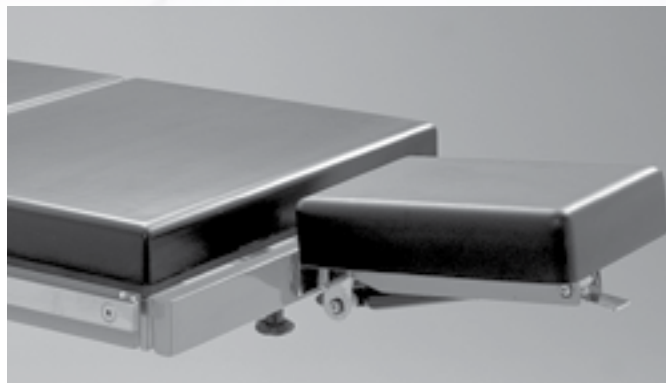
ALL CLAMPS FIT U.S. RAILS



1. WIDE HEADREST C100-3399

Multi articulated wide head rest with PUR padding.

- Size 275 x 406 x 50 mm (10.8 x 16 x 2")



2. NARROW HEADREST C100-3404

Multi articulated gas assisted narrow head rest. Perfect solution for ENT surgical procedures.

- Size 275 x 206 x 50 mm (10.8 x 8.1 x 2")



3. ENT-SURGERY HEAD REST C100-3408

Gas assisted narrow head rest with contour moulding for comfort, vertical up and down manipulation. Perfect for ENT surgical procedures.

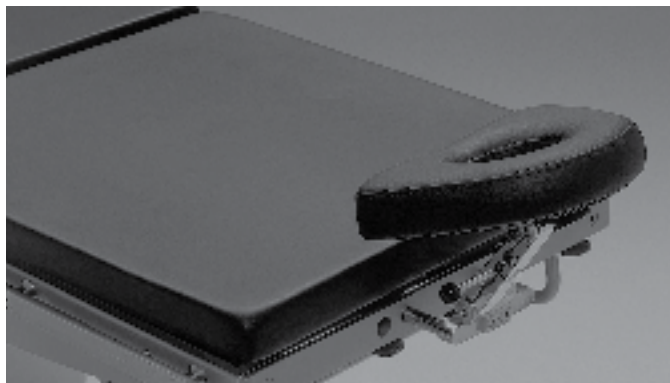
- Size 245 x 242 x 40 mm (9.7 x 9.5 x 1.6")



4. HEAD REST C100-3406

Suitable with all Merivaara operating tables with Beach Chair back rest when you need to perform other surgical procedures. Highly recommended for Smarter Practico Beach Chair.

- Size 300 x 408 x 80 mm (12 x 16 x 3.1")



5. ENT-OPHTHALMOLOGY HEAD REST C100-3409

Double vertical articulation narrow head rest, perfect for ophthalmic surgical procedures.

- Size 225 x 290 x 60 mm (8.9 x 11.4 x 2.4")



6. OPTHALMOLOGY HEAD REST C100-3416

Double articulated head rest for ophthalmology, non gas assisted. Double joint mechanism, wider range of adjustments.

- Size 225 x 290 x 60 mm (8.9 x 11.4 x 2.4")



7. BEACH CHAIR HELMET HEAD REST C100-3405

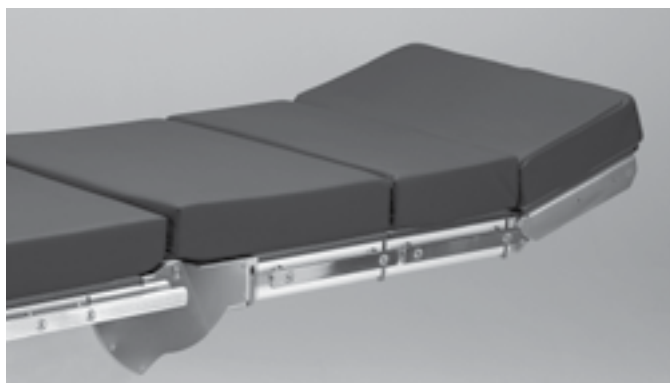
Multi directional helmet with forehead strap, to be used for shoulder operations with Beach Chair back rest. Unique sliding function with double joint mechanism, can be locked into height position. Very wide adjustments in all directions.

- Works with Practico Beach Chair back rest
- Height adjustment 220 mm (8.7")
- Horizontal adjustment 230 mm (9.1")



8. KIDNEY AND THORAX HEAD REST C100-3418

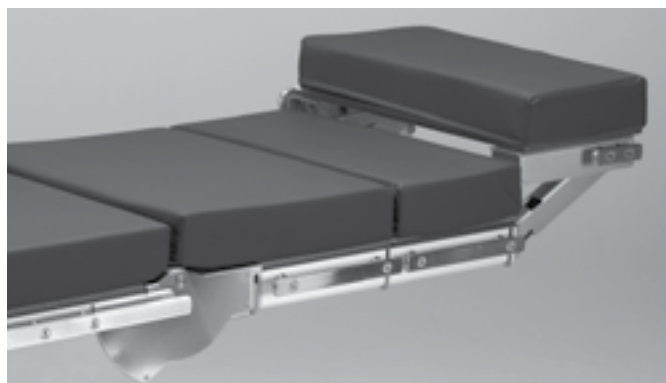
- Size 300 x 540 x 80 mm (12 x 21 x 3.1")



9. HEAD REST C100-3419

All purpose head rest for wide range of surgical applications.

- Size 540 x 300 x 80 mm



10. HEAD REST C100-3392

Double articulated gas spring assisted head rest with side rails. Perfect for lateral positioning of the patient. Helps with spinal alignment.

- Size 540 x 300 x 80 mm (21.3 x 12 x 3.1")
- Includes accessory rails



11. HEAD REST ADAPTER C100-3391

Adapter for for fixing special head rests, e.g. I8150 for phthalmology, using Doro/ Mayfield Cranial Positioning System.



12. PUSH BAR C100-3461

Push bar hand support for maneuvering the operating table and for supporting the end user's hands when activating head rest articulation.

- Diameter Ø 16 mm (.6")



1. ARM REST C100-3422

Padded arm board includes a fixing clamp for mounting to the OP table side rail. Straps included. Adjustable height, gas spring assisted angle adjustment. Rotates 180 degrees. Suitable for supine, lateral and prone positioning.

- Size 205 x 640 x 60 mm (8 x 25 x 2.4")



2. ARM RESTS C100-3423

Arm rest pair for ophthalmology is designed to support surgeon's arms during operation. Arm board turns 360 degrees. Height adjustment with joint screw on the side of the aluminium clamp.

- Size 85 x 300 x 40 mm (3.3 X 12 X 1.6")
- Rod diameter Ø 16 mm (.6")



3. ARM REST C100-3424

Padded arm rest including fixed clamp and strap, adjustable height and angle (ball joint), easy to use with one lever on back side.

- Size 160 x 605 x 30 mm (6.3 x 24 x 1.2")



4. ARM REST C100-3425

Padded arm rest with adjustable height and angle (ball joint), easy to operate and adjust by one lever. Arm board rotates 180 degrees.

- Size 160 x 605 x 30 mm (6.3 x 24 x 1.2")



5. ARMBOARD A310-056

Quick-release, rail mounted (requires Clamp-on Accessory Rail A100-1007 unless used on a table with built-in accessory rails).

7. REPLACEMENT PAD X100-1755

Replacement pad for A310-056 Armboard.



6. MULTI-TASK ARMBOARD C100-3407

Arm rest provides arm support for prone, neuro, lateral and chair positions. A wide range of position flexibility, turns 360 degrees and is height adjustable.

- Size 150 x 510 x 30 mm (5.9 x 20.1 x 1.2")

“

We have a wide range of accessories for various applications.



8. HAND OPERATING TABLE C100-3411

Special shaped radiolucent hand operating table with one support leg. Its curved design allows for the surgeon to get closer to the operating area without the need to lean forward.

Includes pad and clamps.

• Size 850 x 520 x 30 mm (33.5 x 20.5 x 1.2")



9. HAND TRACTION DEVICE C100-3412

Traction device C100-3412 for C100-3411 only.



10. HUMERUS TRACTION KIT A100-3456

Including:

- Counter traction post
- Traction device
- Weinberger hand fixation device
- Two clamps



11. COUNTER TRACTION POST C100-3457

12. TRACTION DEVICE C100-3458

Weinberger hand fixation device.



12. HAND FIXATION DEVICE C100-3459

Weinberger-type. Can be used only with hand operating table



10. THE CARPA TABLE C100-3427

Arm and hand table for carpal tunnel and other minor procedures. Unique cantilevered side frames create an extremely rigid surface that is completely radiolucent. Vertically adjustable 50 mm (2"). Soft pressure management pad for optimum patient comfort and stability. Including two clamps.

- Size 360 x 660 x 35 mm (14.2 x 26 x 1.4")



11. ARM AND HAND TABLE C100-3462

Radiolucent top 350 x 800 mm (13.8 x 31"). End rail provided for traction attachment. Mounts to side rail with two included clamps. One support leg, which offers height adjustment from 830 mm (32.7") to 1320 mm (52").

- Size 360 x 810 x 35 mm (14.2 x 31.9 x 1.4")

COMFORTFIN™ STIRRUPS

1. COMFORTFIN 350 STIRRUP PAIR A100-2246



The IDI ComfortFin 350 stirrup is designed for patients with a BMI of less than 29 with a large flexible lateral fin and can support patients up to 159 kg (350 lb) weight capacity.

2. COMFORTFIN 500 STIRRUP PAIR A100-2247



The IDI ComfortFin 500 stirrup is designed for patients with a BMI of greater than 29 with a large flexible lateral fin and can support patients up to 227 kg (500 lb) weight capacity.

“

Provides unparalleled pelvic site access, larger boot sizing and better infection control.



Clamp C100-3397 compatible with stirrups.



3. COMFORTFIN STIRRUP CART C100-3044

- Base width: 549.3 mm x 549.3 mm (21.6 x 21.6")
- Cart height: 1035 mm (40.8")
- Easy to push and pull with ergonomic handles
- Stirrups secured to prevent damage
- Clamp storage compartment
- Safely holds most stirrups
- Locking casters



4. DISPOSABLE COVERS FOR
URO TABLE FOOTSWITCH C000-0492

610 x 508mm (24" x 20"). Box of 50.



6. BASIC KNEE CRUTCHES A100-2248

For patients up to 400 lbs. (180kg) Basic pair with pads.

Includes two C000-0746 rotating side rail clamps.



5. URO COLLECTION UNIT
15 LITER CAPACITY C000-1307

15 liter capacity, Box of 10.

Flexible plastic sided container expands into a cube as it collects waste fluid when floor drain or suction is unavailable. Internal baffle system enables container to fill evenly as powder converts liquid to gel. Integrated valve system allows user to shut off the flow of liquid from the drain bag in order to change collection units.



7. ARTHROSCOPIC LEG HOLDER C100-3432

Knee positioning device for arthroscopy, including clamp.

- Requires radial clamp for fixing



8. ARTHROSCOPIC STRESS POST C100-3433

A levering fulcrum for improved access to the medical compartment of the knee. Mounts to accessory rail. Pad 210 x 90 mm (8.3 x 3.5"). Height adjustment 59–290 mm (2.3 x 11.4").

- Includes universal clamp



9. TOTAL KNEE STABILIZER C100-3434

Convenient, stable device to support the flexed leg during total knee procedures.

- Includes pad and clamp



10. THIGH HOLDER C100-3436

For securing the patient in the lateral position, the curvature of the thigh holder ensures patient comfort and stability.

- Includes universal clamp
- Rod diameter 16 mm (.6")



11. LIGHT FOOT REST C100-3380

Rigid lightweight single piece leg section for the pre-positioning of the patient before being placed into the lithotomy position. Easy to remove and attach.



13. LIGHT MOTORIZED LEG SECTION C100-3384

Light leg section improves work ergonomics of the OR staff. Lightweight leg section attaches to the operating table.



15. FOOT REST / TABLE EXTENSION C100-3463

To prevent the patient from sliding during procedures requiring reverse Trendelenburg. Can be folded down during patient preparation.



12. LIGHT NON-MOTORIZED LEG SECTION C100-3381

Light leg section improves work ergonomics of the OR staff. Lightweight leg section attaches to the operating table with locking mechanism.



14. FOOT SUPPORTS C100-3431

Intended to be used on split leg sections as well as on one piece leg section. The supports can be adjusted along the operating table to support patients of different length.

- Total width of one foot support 290 mm (11.4")
- Total length of one foot support 330 mm (13")
- Adjustable height 320-440 mm (12.6 - 17.3")



SMARTER PRACTIO TABLE PADS COMPLY WITH FOLLOWING REGULATIONS:

- Fire retardancy
- Conductivity/antistatic
- Systemic toxicity ISO 10993/II
- Irritation & sensitization ISO 10993/IO
- Fully Latex free

Visco-elastic foam (VEF) with premium patient comfort against decubitus ulcers. Surface material is ultrasonically welded to prevent fluid penetration.

CALL IDI FOR SMARTER PRACTICO TABLE PAD ORDERS

Telephone: 978-829-0009



1. STRAP PAIR C100-3464

Straps (pair) for arm rests
 • Length 800 mm (31")



3. LEG-BODY STRAP C100-3441

Wide leg and body strap, for safe patient positioning. Fixing with velcro fastening.

- Total length: 2440 mm (96"), length of the strap: 1220 mm (48")
- Width of the strap: 46 mm (1.8")



2. BEACH CHAIR SUPPORT BELT C100-3454

To support patient in Beach Chair during operation. To be used with beach chair back section

- Width of the pad 140 mm (5.5"), length of the pad 370 mm (14.6")
- Width of the strap 50 mm (2")
- Including clamp and vertical support pole
- Height adjustment 300 mm (12")



4. VERTICAL SUPPORTING ROLL C100-3444

Patient Positioning device.
 Total length 662 mm (26").
 Vertically adjustable 350 mm (13.8").
 Horizontally turns 360 degrees.
 Horizontally adjustable 170 mm (6.7").

- Pad size: length 270 mm (10.6"), Diameter 133 mm (5.2")



5. HORIZONTAL SUPPORTING ROLL C100-3445

Comfortable supporting roll for knee operations.
 Total length 454 mm,
 Vertically adjustable 350 mm (13.8").
 Horizontally adjustable 175 mm (6.9").
 Turns horizontally 360 degrees.

- Pad size: length 300 mm (12"), Diameter Ø 133 mm (5.2")



6. SIDE SUPPORT C100-3443

Lateral Side support with a clamp and a molded padding.
 Adjustable height 120 mm (4.7").
 Horizontal adjustment 60 mm (2.4").

- Accessory rod diameter Ø 16 mm (0.63")



7. SHOULDER SUPPORT PAIR C100-3448

Used for deep trendelenburg of patient, Padded. Adjustable angle and distance to shoulders. Rotates 360 degrees. Adjustable distance (width) 55–180 mm (2.1 - 7.1").

- Includes clamps



8. ARM-LEG SHIELD C100-3451

Easy to use. Can be used on any table. Padded leg/arm shield for safe patient positioning.

- Pad size: 300 x 120 x 60 mm (12 x 4.7 x 2.4")



9. RECTANGULAR LATERAL BRACE C100-3447

Provides secure and comfortable positioning for hip and other procedures requiring optimum lateral stability. The durasoft pads provide soft cushioning of bony prominences. The swivelling heads conform to anatomical contours and can be securely locked for precise positioning. Rotates 360 degrees.

- Includes a mounting clamp



10. ROUND LATERAL BRACE C100-3446

Pubis support for lateral positioning.



11. 76 mm (3") RESTRAINT STRAPS (PAIR) C000-0571

- Fabric with velcro fasteners.



I. CURVE SPINE FRAME C000-1750

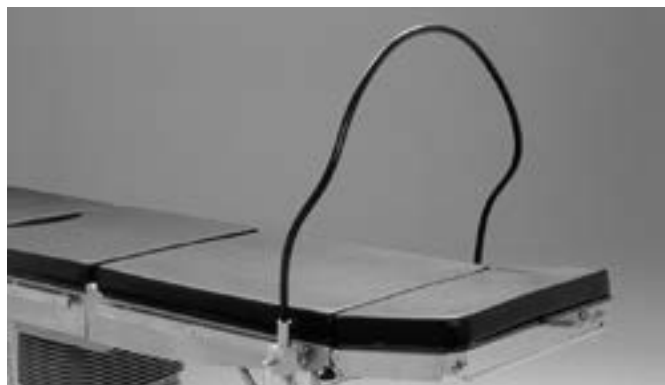
Provides maximum lordosis for Laminectomy, Decompression, Disc Surgery and Microdiscectomy procedures. Includes hand crank. Patient supports are adjustable to fit different patient sizes. Maximum patient weight: 272 kg (600 lbs).



1. INFUSION ROD C100-3596

Side Rail Mounted Infusion rod with clamp.

- Height adjustment
840–1190 mm
(33 x 47")
- 4 hooks included



2. FLEXIBLE ANAESTHESIA SCREEN C000-0965

Flexible "hoop" style. For use on accessory rails - a pair of rotating side rail clamps, part number C000-0746, are required. Rotating side rail clamps and clamp-on accessory rails are not required if table is ordered with the A100-2317 Headrest Extension.



1. CASSETTE TRAY C100-3466

Support and positioning aid for X-ray cassettes.

- Size 395 x 595 mm (15.5 x 23.4")
- Stainless steel



3. FOOT CONTROL DEVICE C100-3390

Adjustments for Trendelenburg, height and side tilt.

- Size 390 x 190 mm (15.4 x 7.5")



5. INSTRUMENT TABLE ROTATABLE C100-3595

Allows for easier access to the table thanks to its easy on accessory rail mounting. Can be manoeuvred for more specific placement.

- Size 540 x 400 mm (21.3 x 20")
- Accessory rod diameter Ø 16 mm (0.63")
- Unique locking system – locks both pivots by means of one lever



2. TABLE WIDTH EXTENDER C100-3588

Width extender for extending the width of the operating table for bariatric patients.

- Size 500 x 105 mm (20 x 4.1")



4. INSTRUMENT TABLE C100-3594

Allows for easier access to the table thanks to its easy on accessory rail mounting.

- Size 500 x 400 mm (20 x 16")
- Accessory rod diameter Ø 16 mm (0.63")



7. HEAVY DUTY MEDICAL GRADE ANTI-FATIGUE MAT C000-1181

610 x 1767 x 19mm (2 4" x 66 x 3/4")

IDI heavy-duty anti-fatigue mat. One-piece construction for high-traffic areas. Safe & non-toxic, contains no plasticizers and will not leach over time. Durable brushed texture.



9. EXTENSION RAIL C100-3589

For extending the length of the table side rails.

- Length 400 mm (16")



10. ANGLED EXTENSION RAIL C100-3590

For creating an extended angle of the table side rails.

- Length 275 mm (10.8")
- Adjustable slide movement



11. ANGULAR ACCESSORY RAIL C100-3591

For lowering height of the table side rails.

- Length 250 mm (9.8")
- Height adjustable 220 mm (8")
- Hook on clamp included



12. EXTENSION RAIL C100-3592

For extending the length of the table side rails. Fits to both sides of the table.

- Length 550 mm (21.7")



8. MULTIPURPOSE ACCESSORY CART C100-3593

For mobile storage and moving Merivaara operating table sections and accessories.

- Size 580 x 810 mm (22.8 x 31.9"). Height: 1770 mm (69.7")
- 4 castors with lockable brakes
- Holds up to total of 12 sections on both sides of the cart
- Includes 6 accessory rails which enable variable accessory storing
- 2 baskets 590 x 300 x 150 mm (23.2 x 12 x 5.9") can be placed in 6 different locations
- Long sections, such as lightweight transfer board and carbon fibre backrests, can be placed in vertical position in two locations

Why IDI?



INSTALLATION & TRAINING

We look good when you look good.

Image Diagnostics provides table installation and image optimization for all products. Put your trust in a team that has completed more than 20,000 installs and clinical demonstrations since 1986.

DEPTH & BREADTH OF PRODUCTS

One call, one company; we have the OR and imaging products you need.

Industry-leading value and quality throughout our portfolio; surgical and imaging tables, visualization products as well as x-ray shielding and surgical lighting.

SALES SUPPORT

From system quotation to final installation, we are with you every step of the way.

For over 30 years Image Diagnostics has been delivering quality high-performance products with an equally high level of pre and post-sales support. Challenge us; our sales and technical support are second to none.

RELIABILITY

Intelligent Design ► Tangible Outcomes is more than just our slogan, it defines our approach to products.

Every product will eventually require service. Image Diagnostics tables and visualization products are designed with both reliability AND ease of serviceability in mind. For example, our tables are electro-mechanical, rather than hydraulic, and without complex sub-systems that are costly and complicated to repair. Our design approach keeps IDI equipment in service longer and reduces the overall cost of ownership.