

Ilex Multiview Q-Card

Power On Device

Ilex unit is equipped with power cord. Plug power cord into hospital grade outlet. Press Green "ON/OFF" switch on the left side of the top shelf. Turn on the tablet by pressing the power button on the bottom of the tablet

Power Off Device

Tablet must be turned off prior to switching off power to Ilex unit. Press and hold the power button for 3-5 seconds on the bottom of the tablet. Once tablet lights are off, press the green power button to turn off the entire Ilex system



(Bottom view of tablet)
Tablet "on/off" switch



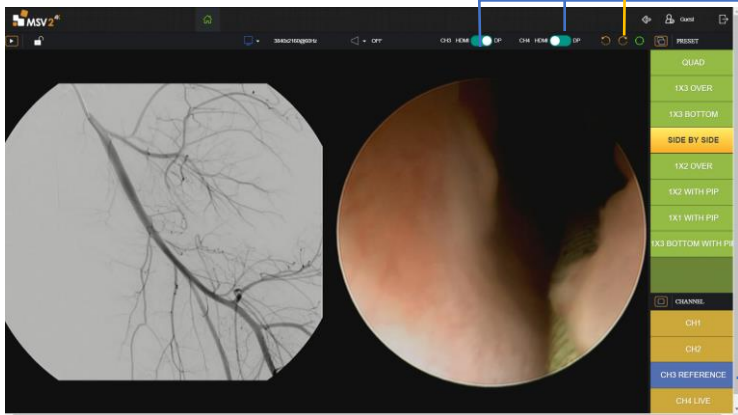
Ilex main power
"ON/OFF"
switch



Scan Here for
Operator Manual
Then Scroll to Ilex



WARNING!
Read operator
manual prior to use



Rotate images. Green resets back to original location

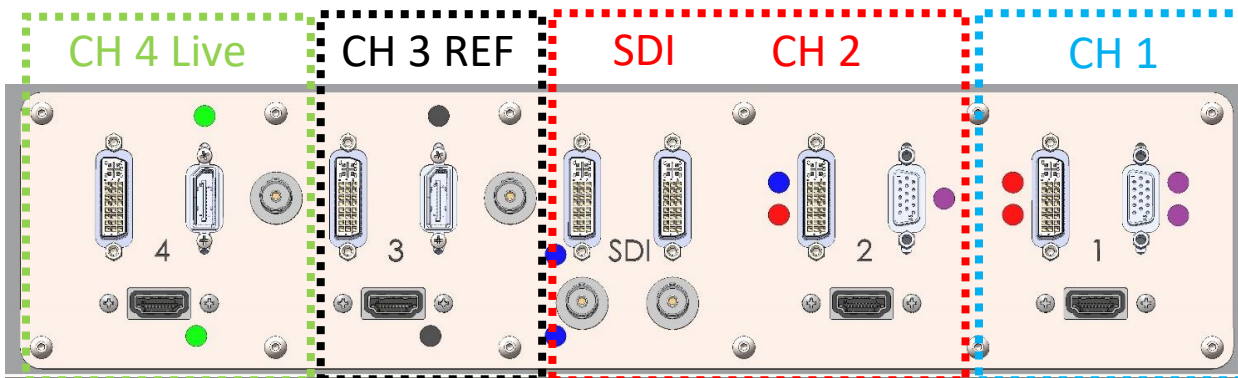
If using DP in CH3 or CH4, flip switch (If DP is active the channel will highlight blue) If not using DP, switch to HDMI.

To change layout, press one of the preset buttons.

To show single channel images, press one of the channel buttons.

Blue highlight indicates DP is active in this channel.

Rear Panel Inputs



Back Side of Ilex, plug in video sources to be connected to monitor

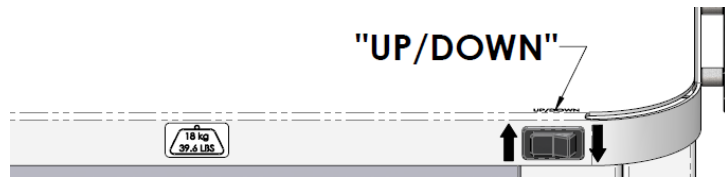
Each channel has a designated video input on the monitor. The device connected first in each channel will present on the monitor..

Ilex Multiview Q-Card

Adjusting Height of the Monitor

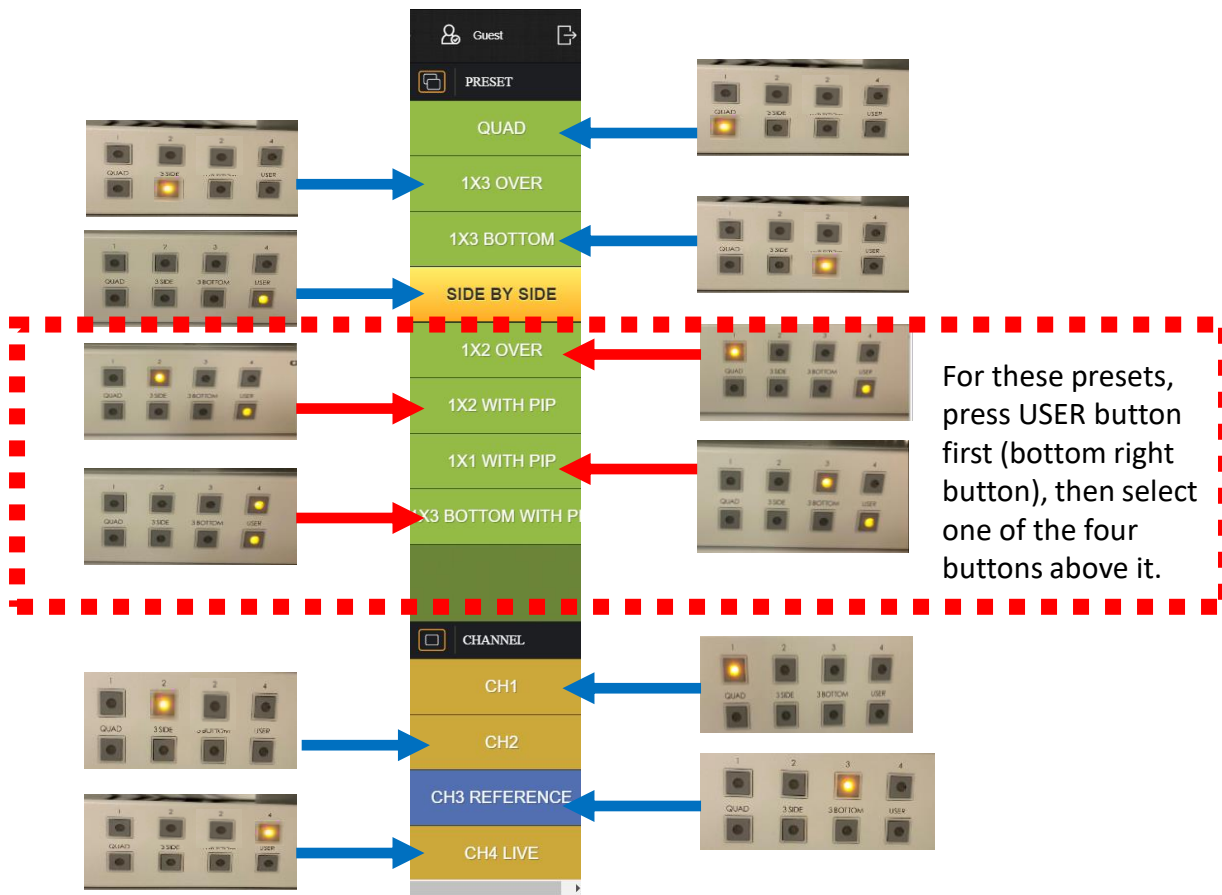
The monitor height is adjustable.

To adjust the height, then press the up or down button on the right-hand side of the top shelf.

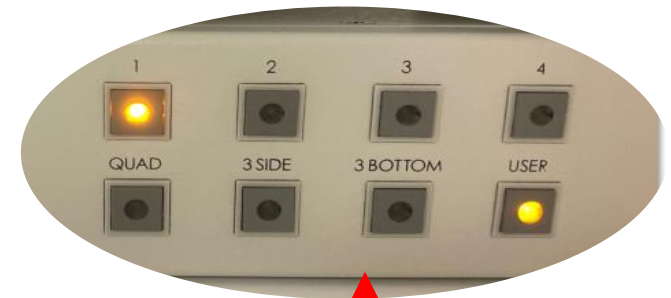


Manually Change Sources

If the tablet is inoperable, the images on the main monitor can be manually changed. Flip down the front cover under the top shelf. Locate the buttons on the end of the router. Each of the layouts presented on the tablet can manually be shown with the correct buttons pressed.



For these presets, press USER button first (bottom right button), then select one of the four buttons above it.



In some instances, buttons may need to be pressed twice.