

# 100-4T

*Interventional / Endovascular Imaging Table  
with manual 4-way floating top and trendelenburg tilt*



**The Smart Choice:**

***Now with wireless controls!***

- 600 lb. patient capacity - standard
- 80" of imaging area with extension for total body coverage
- Instantly switch between A/C and battery backup
- Highly reliable USA built: No leaky hydraulics, No pneumatics
- Encrypted wireless tabletop controls
- Effortless float operation
- Low base height for easy patient access
- Three year parts and labor warranty\*

**idi**  
imagediagnostics.com

**INTELLIGENT DESIGN ► TANGIBLE OUTCOMES**

# 100-4T

## Provides surgical articulation in a four-way manual float table with trendelenburg tilt

Image Diagnostics' 100-4T represents the ideal balance between performance and price. In the OR and office-based labs the 100-4T is the preferred imaging solution during interventional and vascular procedures.

The 100-4T delivers 32" of longitudinal float in a very compact platform. Table positioning in smaller rooms is enhanced while comprehensive anatomical coverage can easily be accomplished without any C-Arm movement.

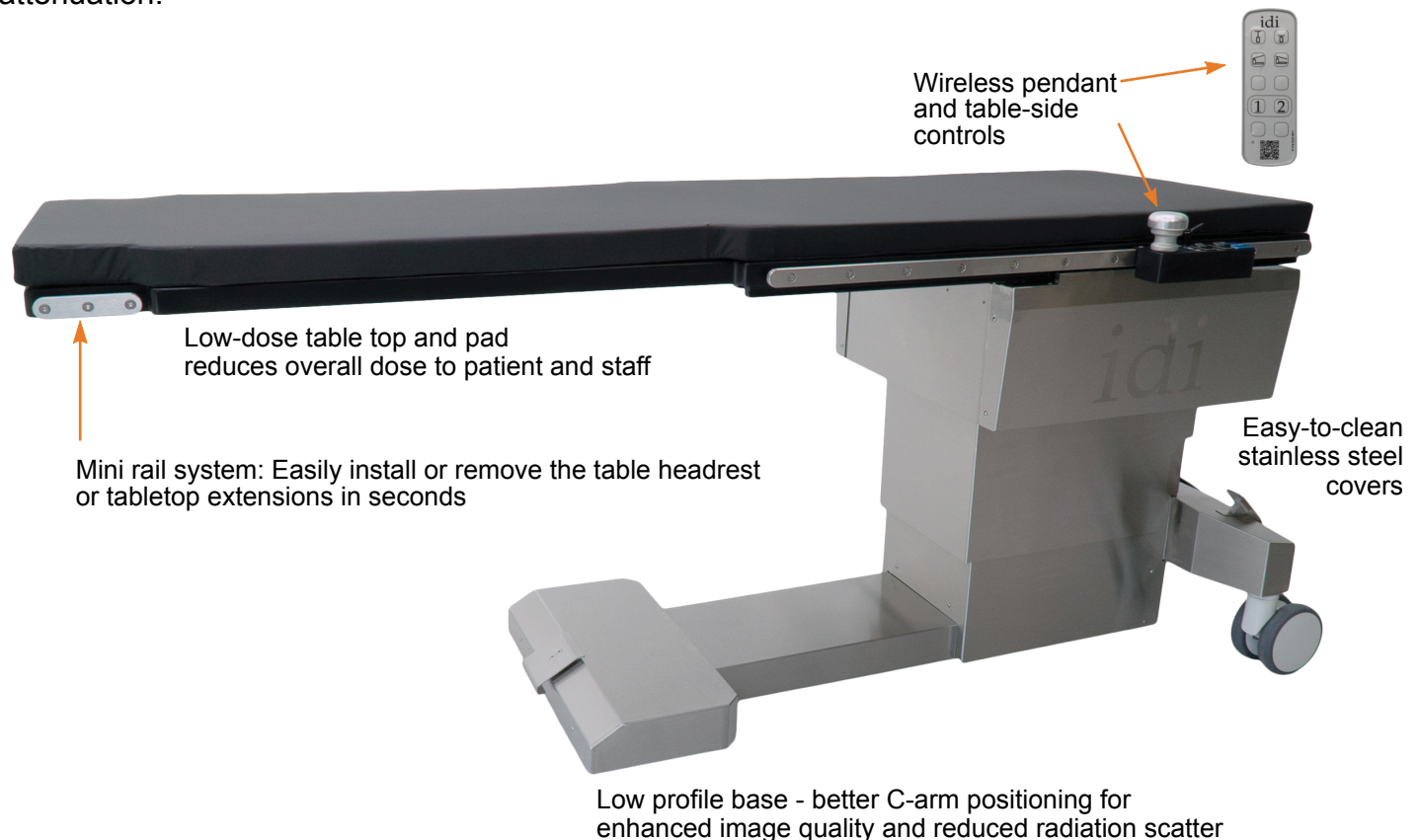


### Complete wireless table control at your fingertips

Panning and motorized functions combined into one easy to use wireless control handle

*No need to switch between a pendant and panning control!*

The standard 84" top provides 68" of imaging area. When equipped with the optional head rest or peripheral extension, the imaging area increases to 80" – allowing head-to-toe imaging on a 6' 8" patient. A high-quality carbon fiber tabletop and 2" thick tabletop pad deliver minimal total x-ray attenuation.



# 100-4T

## Standard Tabletop

**100-4T #A100-2602**  
(U.S. Accessory Rails)

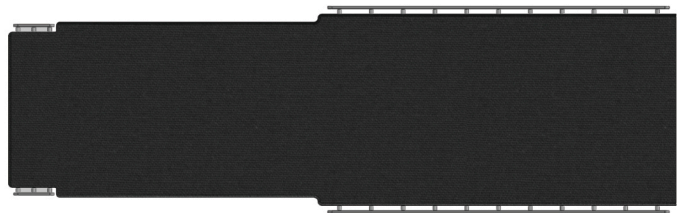
**100-4T #A100-2831**  
(Metric Accessory Rails)

The standard tabletop 24"x 22"x 19.5"x 84" with mini-rails provides 68" of imaging area. When equipped with the optional head rest or peripheral extension, the imaging area increases to 80", allowing head-to-toe imaging on a 6' 8" patient.

A high-quality carbon fiber tabletop and 2" thick tabletop pad deliver minimal total x-ray attenuation.



Ask about radiation shielding options



## GI Width Tabletop

**100-4T #A100-3890**  
(U.S. Accessory Rails)

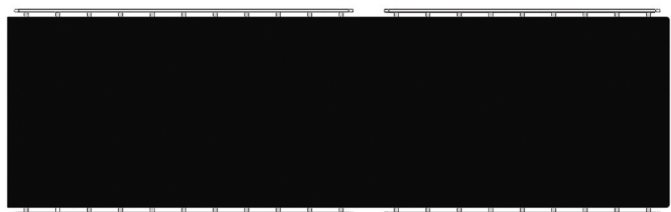
**100-4T #A100-3891**  
(Metric Accessory Rails)

The GI width 24" x 84" rectangular tabletop provides an expanded surface for larger patients in GI and and specialized imaging applications. The table includes full length integrated side rails for accessory mounting and one table width extender.

The high-quality carbon fiber tabletop and 2" thick tabletop pad delivers minimal total x-ray attenuation.



Above: Single Width Extension





# 100-4T



100-4T table shown with IDI's ilex video integration system

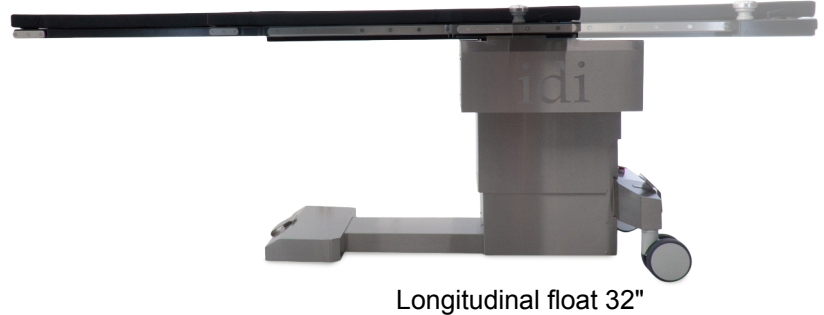
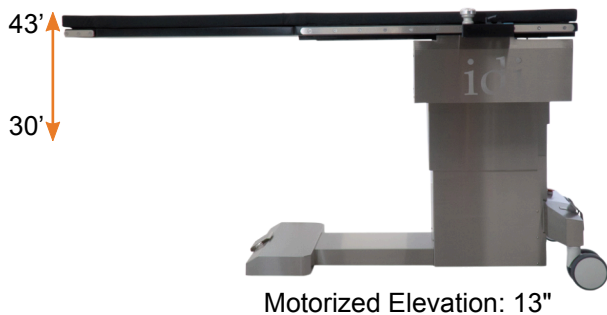


100-4T table with optional headrest extension

- **Safety and functionality** - Lock out motorized functions without losing panning ability. Accidental release of the panning control is prevented by an intuitive handle release design.
- **Extension and imaging**- A mini-rail system allows for the installation of extensions and accessories in seconds.
- **Reliability and simplicity of design** - IDI is a market leader in advanced vascular imaging tables. Long-term reliability is reflected in our comprehensive three year parts and labor warranty.\*

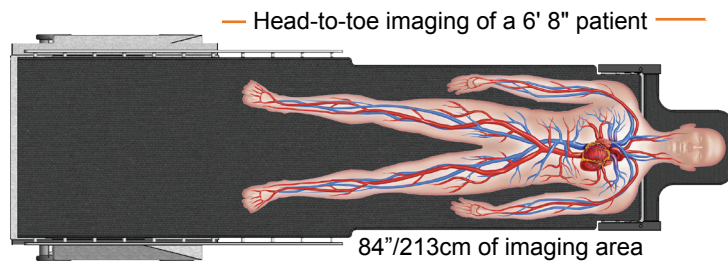


# 100-4T Table Motions

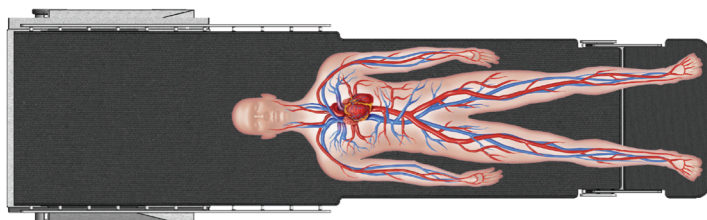


# 100-4T Table Assets

Standard tabletop shown with optional head extension



Standard tabletop shown with optional peripheral extension



# 100-4T Optional Accessories



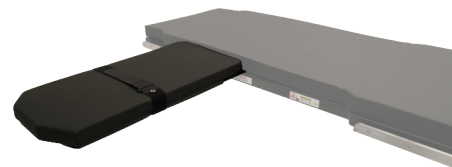
## Headrest extension

Articulating carbon fiber headrest. Attaches to the imaging end of the standard tabletop.



## Clamp-on Accessory Rail

For attaching accessories to the tabletop. Rail is 8 1/2" long x 3/8" thick x 1-1/8" high.



## VAB Arm board

Carbon fiber, one-piece, extra wide arm board for vascular access procedures such as fistula applications.



## Arm board

Quick-release, rail mounted. Requires clamp-on accessory rail if mounting to section of tabletop without accessory rails.



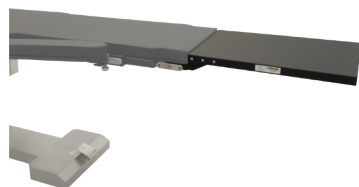
## IV Pole

Stainless steel with four bottle hooks . Range: 42.2" - 65.4" (1070 -1660 mm) Tube diameter: 0.98" / 0.71" (25 / 18 mm). IV Pole includes rail clamp.



## Tabletop Catheter Tray Extension

24" wide. Mounts to pedestal end of table only. Maximum weight this extension can support is 20 lbs. or 9 kgs.



## Tabletop Catheter Tray Extension for lower peripheral procedures

21" wide, mounts to imaging end of table only. The maximum weight this extension can support is 20 lbs. or 9 kgs.



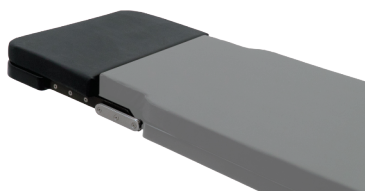
## Radiation Shield

0.5mm lead equivalent. Articulating, rail-mounted. Attaches to table side-rail at base end of table, either side, adjustable. Articulating joint allows shield to conform to table contour.



## Anesthesia Screen Holder

Flexible "hoop" style can be mounted to standard accessory rails with optional rotating side clamps (required) or directly mounted to the A100-2317 Headrest Extension.



## Peripheral Extension

Carbon fiber extension, mounts to the imaging end of table only. 22" wide. Maximum weight for this extension is 25 lbs or 11.4 kgs.



## Side-rail clamp

Rotating, with socket for attachment of accessories with 5/8" circular post.



## Table Width Extension

Attaches to 100-4 GI width tabletop side rail. 4" x 20". One included with GI width tabletop.

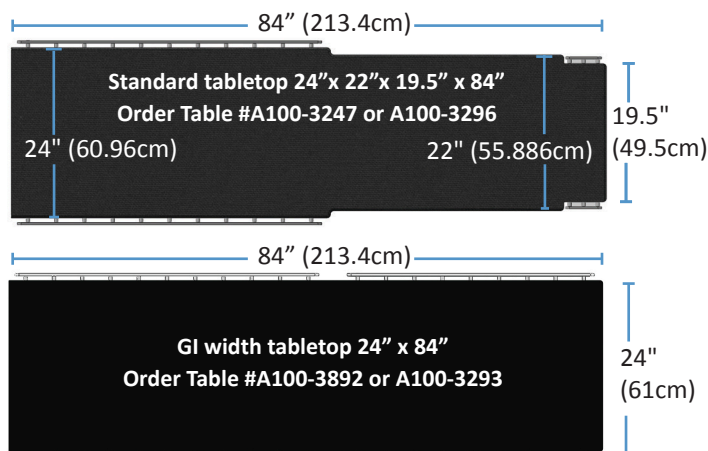
# 100-4T Specifications

## Table movements

- Longitudinal tabletop travel: 32" (81.3 cm)
- Transverse tabletop travel: 8" (20.3 cm)
- Trendelenburg Tilt:  $\pm 12^\circ$  with automatic "stop-at-level" positioning and longitudinal safety lockout when in trendelenburg
- Table elevation: 30" - 43" (76 - 109 cm) without tabletop pad. 32" - 45" (81 - 114 cm) with pad

## Choice of two tabletops

- **Standard tabletop 24"x 22"x 19.5"x 84"**  
With U.S accessory rails #A100-3247  
With metric accessory rails #A100-3296
- **GI width tabletop 24"x 84"**  
With U.S. accessory rails #A100-3892  
With metric accessory rails #A100-3893
- Construction: Low attenuation carbon fiber with foam core.



## Electrical

- Power requirements: 115/230VAC < 6 amps
- Full temporary table operation in battery backup mode
- LED power status indicator
- 20' (6 meter) power cord

## Standard accessories

- Tabletop Pad 2" thick, polyurethane foam construction
- Wireless panning hand control, rail-mounted
- Wireless pendant hand control
- Patient restraint straps
  - Standard tabletop: 2 straps
  - GI Width tabletop: 1 strap with pad and rail

## Capacity / Table Weight

- Patient weight capacity: 600 lbs. (272 kg) without tabletop extensions
- Patient weight capacity: 500 lbs. (226 kg) with tabletop extensions
- Table weight: 800 lbs. (363 kg)

## Certifications

- IEC 60601-1:2005 Ed.3+A1;C1:2014,
- IEC 60601-1-2 4th edition
- IEC 60601-2-46 Ed.2, IEC 62366 Ed 1.1
- AAMI ES60601-1:2005+A1
- CSA C22.2 #60601-1:2014 Ed.3

## Warranty

- Three years parts and labor\*

**INTELLIGENT DESIGN**  
► **TANGIBLE OUTCOMES**



Image Diagnostics, Inc. 310 Authority Drive Fitchburg, MA 01420 Tel: 978-829-0009  
A veteran-owned company since 1986. Designed and manufactured in the U.S.  
Image Diagnostics, Inc. reserves the right to update product specifications without notification.  
\*Warranty information for IDI products is available upon request from Image Diagnostics, Inc.  
L100-2913 Rev F

