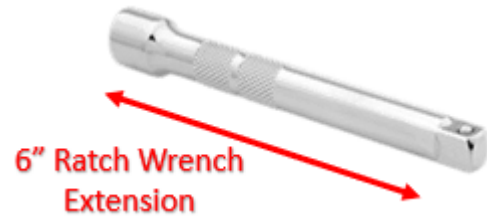
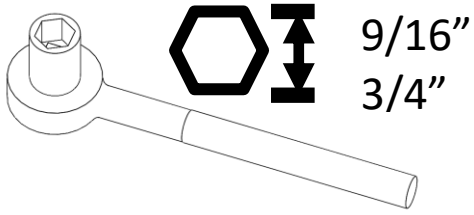


**UNCRATE & CRATE INSTRUCTIONS FOR PROTEGO DEMO**



**ENGLISH AND METRIC ALLEN WRENCHES**

TOOLS IN CRATE SIDE POUCH



9/16 & 3/4 OPEN END WRENCH

Report any shipping Damage to IDI at

978-829-0009  
Engineering



**Crate Size:** **Crate 1, 44"W x 74.5"D x 89.5"H**  
**MOBILE STAND WITH BARRIER**



**Crate 2, 44"W x 74.5"D x 79"**  
**MOBILE BARRIER/HARD CASES**

**1. Uncrating Protego Crate 1 & Crate 2.**

**1.1. Unloading Crate 1 - Shipper - Unbuckle and Unstrap – Steps 1 - 4.**



Step 1 – Unbuckle thru handle    Step 2 – Unbuckle Spring Arm



Step 3 – Unbuckle Horizontal Arm



Step 4 - Unstrap around handle to floor eye bolt.

1.2. Moving bagged Barrier to Park Block – Move Bagged Barrier rear handle out from rear holding block. Step 5.



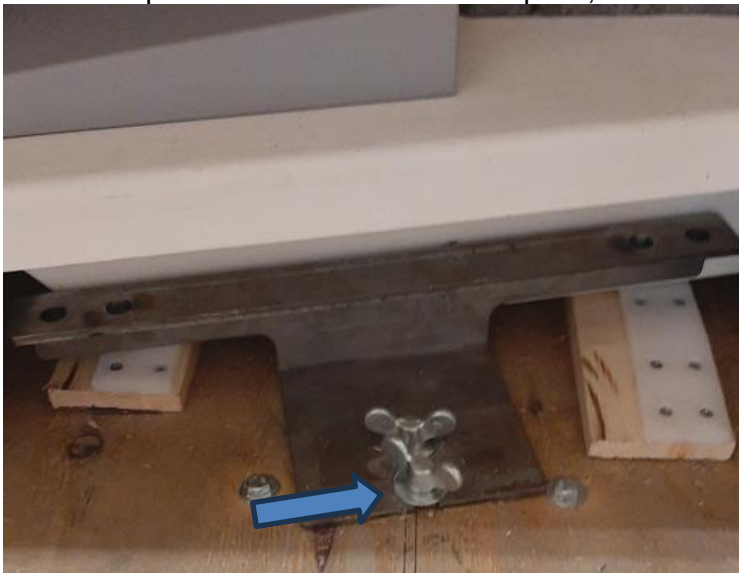
Move Barrier out from rear block

Remove Allens, turn white Park Block out.



Place Barrier pipe into Park Block. Column Strap around Extension Block

1.3. Front floor plate removal – Mount base plate, remove turn bolt to floor.



1.4. The back floor plate will remain fixed - DO NOT REMOVE!



1.5. Items to remain with Mobile Stand with Barrier when removed from crate.



Base Column Block



Barrier Bag

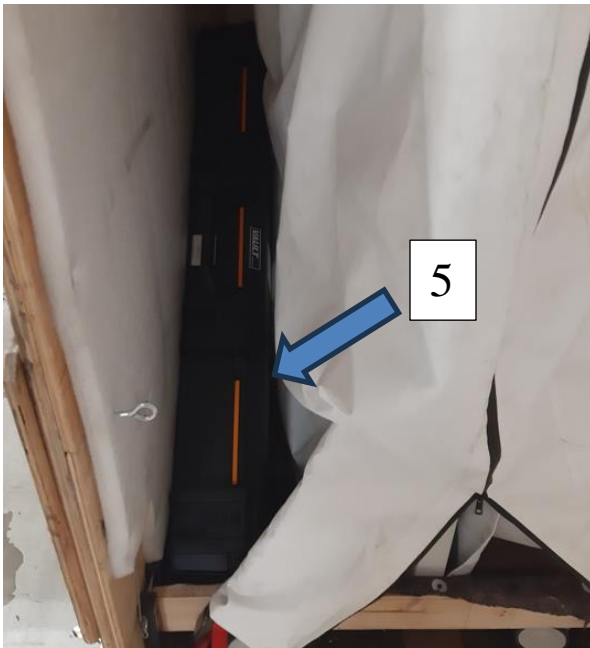
- 1.6. Removing Mobile Barrier from Crate – Force on handles will be needed to slide off the floor ramps under the stand base.



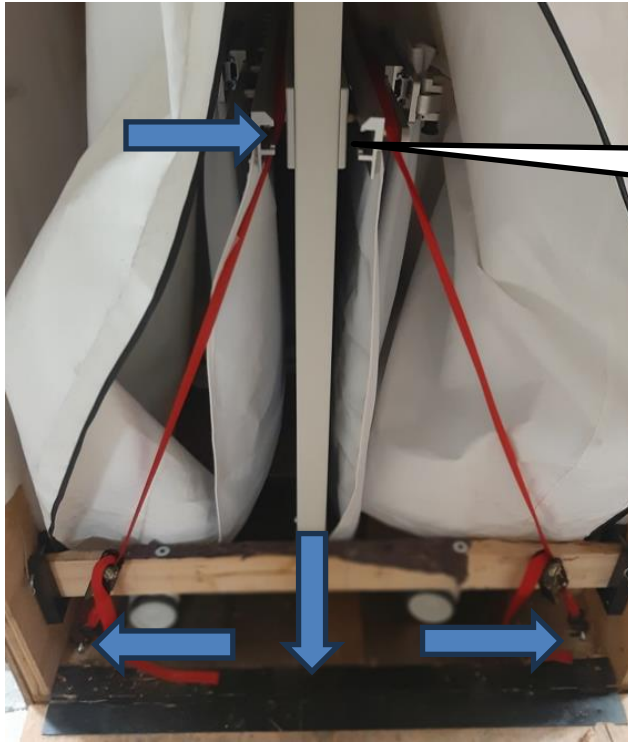
**1.7. Unloading Crate 2 - Shipper**



1.8. – Unloading Covered Mobile Barrier. Remove the two long and one small Pelican cases at the side walls. Item 5 and 6



- 1.9. Unzip barrier bag. Remove the tie down straps to each side. Remove cross 2 x 4. Zip down cover. Unlock castor if locked. Pull mobile barrier from crate. After Barrier is out of crate, take cover off. Leave Tie downs, cross 2 x 4, and white barrier cover in crate.



Remove Straps  
down rails

Unload remaining supplies on the back floor. Items 1,2,3,4



There can be other boxes and supplies to remove from crate. Move items to required location.



**2. Crating Protego Crate 1 & Crate 2.**



**Crate 1**

**2.1. Loading Crate 1**

- 2.2. **(IDI Representative only)** – Column is down with safety pin and base block, tighten lock knob. Put Barrier in park block with Velcro strap. Add bubble wrap to monitor and bag to barrier – in black arm board outer pouch.



2.3. **Shipper** - Make sure bag is on barrier (extra on right back side wall). Shipping Tape maybe in other crate to use closing bag top. Push mobile stand with bagged barrier attached into crate . Force at handles will be needed to push stand base onto ramps on floor. Push base back to floor stop steel plate. No need to go behind product after pushing in crate.



Bag Barrier



Push stand in to back plate.



Velcro Strap

— Add column stop block to stand base if around, Velcro strap.

2.4. Front floor plate mounting, Buckles and Straps – Steps 1- 6. Mount base plate, turn screws to floor.



2.5. **Separate bagged Barrier from Mobile Stand.** Remove column Velcro Scrap, wrap around column. Unparking bagged Barrier from Park Block – push down. Turn Park Block to front position - remove Allen t-handles, turn, replace t-handles. Push the barrier down and to the left to have back handle engage in back crate corner left handle holder, then push front to left wall for buckling.



Remove strap



Turn the park block



Push barrier into crate handle block

2.6. Buckles and Straps – Steps 1 - 4.



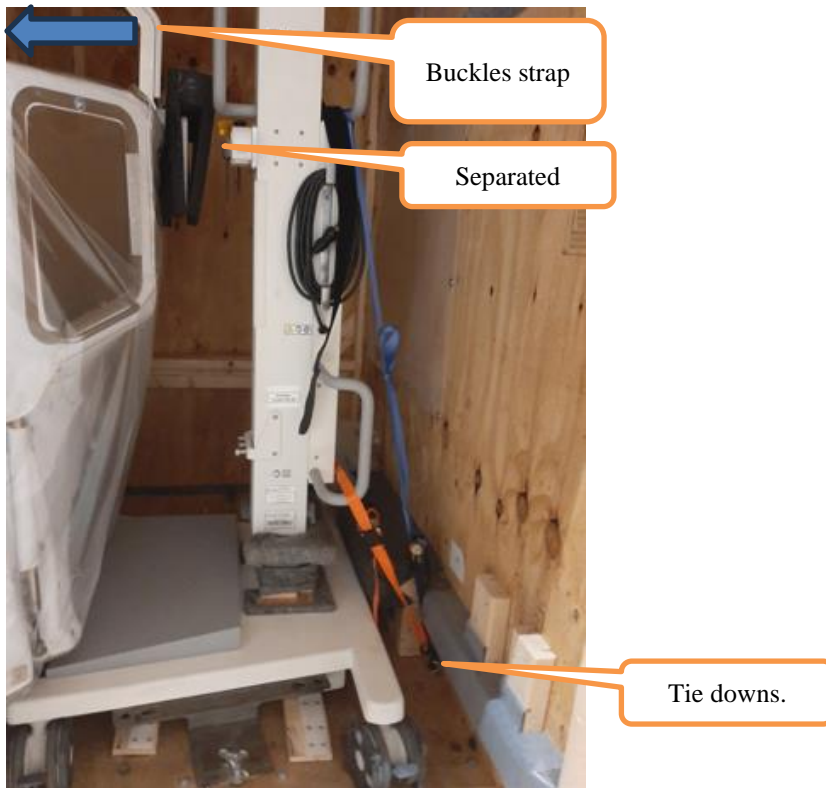
Step 1 – Buckle thru handle



Step 2 – Buckle Spring Arm



Step 3 – Buckle Horizontal Arm. Tighten straps as needed. If buckle strap falls off, remove black cover and re-feed strap thru buckle.



Step 4 - Strap around handles to floor eye bolt.

2.7. Loading Crate 2



2.8. The barrier must have side shield arm bent to 90 degrees with strap for shipping. Make sure Protego label white bag is on barrier. All other products must be boxed or in Pelican cases.



Side Shield

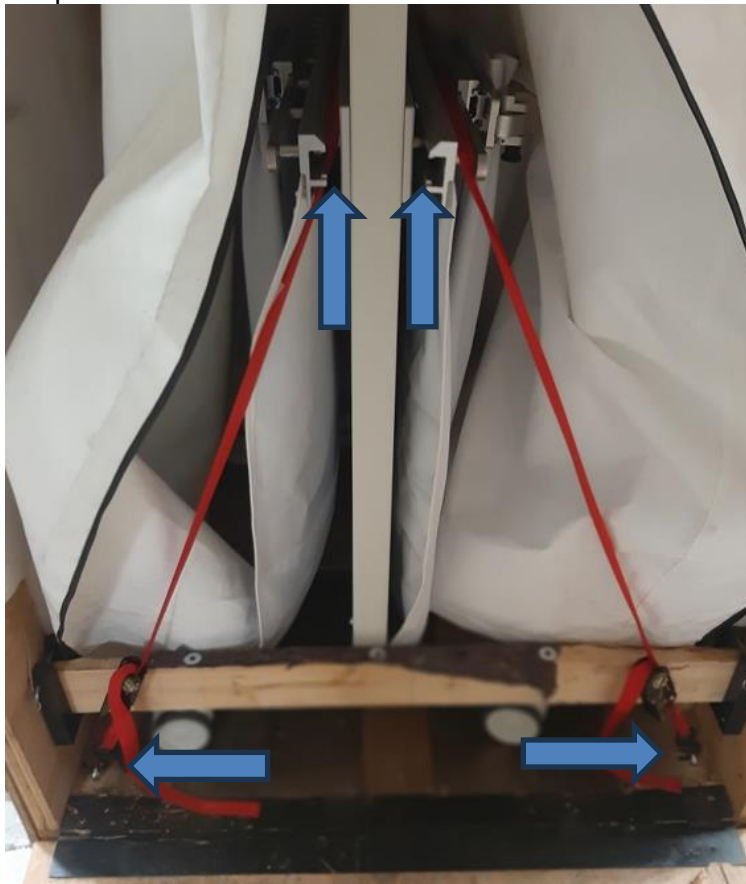
White Protego Bag zipper ,  
this side

Strap with shield panel at 90  
degrees to rail before cover  
with Protego bag.

2.9. Shipper –Load 1, 2, 3, and 4 to back of crate behind floor stop.

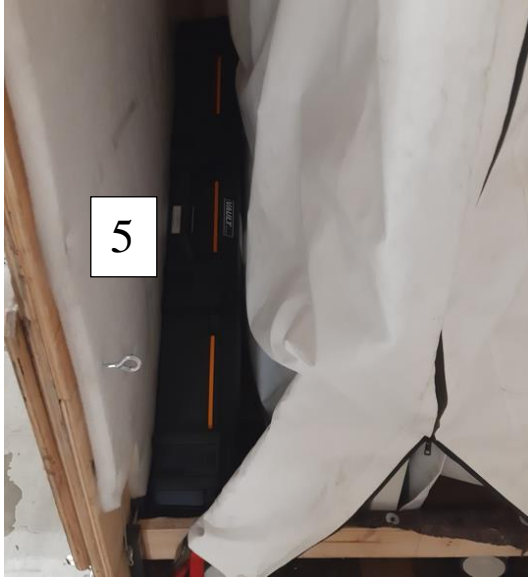


- 2.10. Add White Barrier cover from Crate if on – Zipper opposite shield panel 90 end.
- 2.11. Loading Covered Mobile Barrier. Push mobile barrier into crate centered with side shield arm at 90 degrees to rear of crate. Unzip barrier bag, add cross front bottom 2 x 4. Add the tie down straps from rear floor eyes up over the mid door rail and then back to front floor eyes, strap both door sides.



Pull zipper down after strapping tie downs down inside rails.

2.12. Add remaining Pelican cases, 5 – 6 to bag door sides.



There can be other boxes and supplies.

### **3. Reference Material**

3.1. Reference documents:

- L800-0168 Q-Card, Protego, Mobile
- L800-0170 Manual, Setup & Operator, Protego
- L800-0405 INSTR, Crate-Uncrate, DEMO, Protego

3.2. Addition supplies provided as follow only for Demo Re-Crating:

- Extra Shield Barrier bags.
- Extra Monitor cover bags on crate side wall.
- Box tape gun with new tape roll