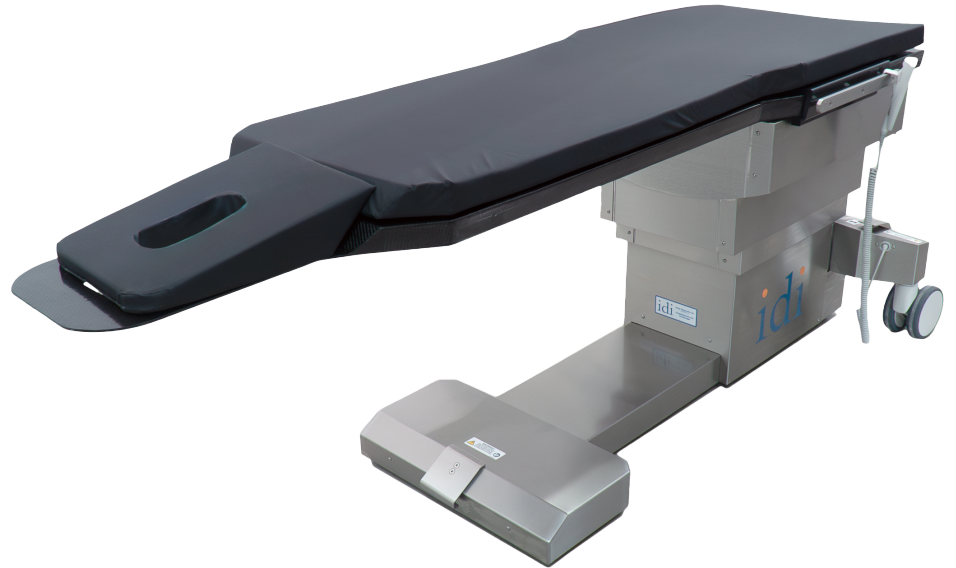


Interventional / Endovascular Imaging

ISO-DRIVE

Table and Accessories Catalog



idi
imagediagnostics.com

INTELLIGENT DESIGN ► TANGIBLE OUTCOMES

Iso-Drive Advanced Spinal Image Table Options and Accessories Catalog



Iso-Drive Description:

C-Arm table for pain management and other imaging procedures where motorized elevation, tilt, lateral roll and longitudinal motion are required.

- Isocentric Roll
- Elevation
- Trendelenburg tilt

Iso-Drive Spinal Imaging Table #A100-3121 with .375" x 1.125" accessory rails (120VAC - 240VAC)

Includes the following:

- X100-3849 Tabletop Pad, 2" (51mm) thick
- X100-3212: Facial Cushion, 1" Thick
- X100-3234: Head Cushion, 3.375" Thick
- X100-3235: Facial Cushion, 3.375" Thick
- X100-3236: Tapered Facial Cushion, 3.375" Thick
- K000-0299: Hand control
- A100-3731: Patient restraint straps (2 straps, 1 pad)
- C000-0597: Crescent shaped facial cushion
- C000-0598: Disposable covers for crescent-shaped facial cushion, box of 50



Tabletop 24" (610mm) x 84" (2134mm)
with facial cutout

Iso-Drive General Purpose Table #A100-3120 (120 - 240 VAC)







Includes the following:

- X100-3310: Tabletop pad, 2" (51mm) thick
- K000-0299: Hand control
- A100-3731: Patient restraint straps (2 straps, 1 pad)
- C000-0597: Crescent shaped facial cushion
- C000-0598: Disposable covers for crescent-shaped facial cushion, box of 50



Tabletop 24" (610mm) x 84" (2134mm)

Iso-Drive Table Optional and Replacement Accessories:

Photo	Description Red text = Metric accessory rails	Catalog Number
	<p>Replacement Tabletop Pad For A100-3120 table. 2" thick foam pad 24" wide x 84" long.</p>	X100-3310
	<p>Replacement Tabletop Pad For A100-3121 table. 2" thick for 84" x 24" x 19" top with 12" facial relief and cutout.</p>	X100-3849
	<p>Snap-on Socket Accommodates a round accessory post. Quickly snaps onto rail and pull bottom lever to release. Mounts and locks anywhere on standard OR table rail. Lithotomy wheel for accessory angle adjustments.</p>	C000-0746 C000-1065
	<p>Simple clamp Accommodates a round accessory post. All metal design clamp mounts and locks anywhere on standard OR table rail. Autoclavable.</p>	C100-3046
	<p>Snap-on Blade Clamp Accommodates a blade-style accessory post. Quickly snaps onto rail, push button to release clamp. Mounts and locks anywhere on standard OR table rail. Prevents false rail engagement. Autoclavable.</p>	C100-3043
	<p>Simple Blade Clamp Accommodates blade-style accessory post. Mounts and locks anywhere on standard OR table rail ends or at rail notches. A cost-effective solution.</p>	C000-1115

Iso-Drive Table Optional and Replacement Accessories:


Photo	Description Red text = Metric accessory rails	Catalog Number
	<p>Armboard Quick-release, rail mounted (requires Clamp-on Accessory Rail A100-1007 or A100-2379).</p>	<p>A310-056 A310-062</p>
	<p>Replacement pad for A310-056 or A310-062 Armboard</p>	<p>C100-3288</p>
	<p>Single use soft armband straps, package of 12</p>	<p>C000-1555</p>
	<p>Clamp-on Accessory Rail Rail is 8.5" long x .375" thick x 1.25" high. Clamp-on Accessory Rail 10mm x 25mm x 216mm clamp-on accessory rail.</p>	<p>A100-1007 A100-2379</p>
	<p>Arm Board Carbon fiber, shoulder mount (attaches by sliding thin section under patient / table pad), flat. Includes pad and strap.</p>	<p>A310-059</p>
	<p>Replacement Pad for A310-059 Armboard</p>	<p>X100-3244</p>
	<p>Hand Control, Iso-Drive Table Must verify table serial # with IDI for compatibility. Motions controlled: Elevation, trendelenburg, Iso-Roll. (Included with table).</p>	<p>K000-0299</p>
	<p>Radiation shield draping - 0.5mm pb lead equivalence For 24" (610mm) tapered Spinal Imaging Table #A100-3121. Dimensions: XX" (xxxxmm) long. xx" (xxxmm) wide draping below tabletop. Draping extends along both side and head-end of table.</p>	<p>A610-0407</p>
	<p>Radiation shield draping - 0.5mm pb lead equivalence For 24" (610mm) rectangular General Purpose Table #A100-3120. Dimensions: 59" (1500mm) long. 24" (610mm) wide draping below tabletop. Draping extends along both side and head-end of table.</p>	<p>A610-096</p>
	<ul style="list-style-type: none"> ● Facial Cushion, crescent shape. ● Disposable covers for facial cushion, box of 50. 	<p>Cushion: #C000-0597 Covers: #C000-0598</p>

Iso-Drive Table Optional and Replacement Accessories:

Photo	Description Red text = Metric accessory rails	Catalog Number
	<p>Heavy Duty Medical Grade Anti-Fatigue Mat (24" (610mm) x 66" (1676mm) x .75" (19mm) IDI heavy-duty anti-fatigue mat. One-piece construction for high-traffic areas. Safe & non-toxic, contains no plasticizers and will not leach over time. Durable brushed texture.</p>	<p align="center">C000-1181</p>
	<p>IV Pole (C000-1324) Stainless steel with four bottle hooks and IV Pole Clamp (C000-1325) Range: 1070 -1660 mm Tube diameter: 25 / 18 mm</p>	<p align="center">A100-3285</p>
	<p>Compass Contour Drape</p> <p>Custom shaped drape for the Compass Contour Radiation Shield. Slips over the lower portion of the shield and is held in place with an elastic band. Sterile. Case of 20.</p>	<p align="center">X610-0208</p>
	<p>Curve Spine Frame</p> <p>Provides maximum lordosis for Laminectomy, Decompression, Disc Surgery and Microdiscectomy procedures. Includes hand crank. Patient supports are adjustable to fit different patient sizes.</p>	<p align="center">C000-1750</p>
	<p>Compass Contour Radiation Shield</p> <p>Contoured ceiling suspended acrylic barrier radiation protection with a lead equivalence of .5mm. Enhanced eye, head and neck protection from x-ray scatter. Shielding area is ~30" (76cm) x 23.5" (60cm) with a 10" radius along the bottom edge of the leaded acrylic shield. Does not include ceiling suspension arm.</p>	<p align="center">A610-0200</p>
	<p>Compass Frame Radiation Shield Rectangular ceiling suspended acrylic barrier radiation protection with a lead equivalence of .5mm. Enhanced eye, head and neck protection from x-ray scatter. Shielding area is ~ 30" (76cm) x 23.5" (60cm). Does not include ceiling suspension arm.</p>	<p align="center">A610-0215</p>

New row

Iso-Drive Table Optional and Replacement Accessories:

Photo	Description Red text = Metric accessory rails	Catalog Number
	<p>Restraint Straps Set of two patient restraint straps with buckle locking mechanism and one pad for patient safety and comfort</p>	<p>A100-3731</p>

ISO-DRIVE Shipping Crate Specifications

Weight (approx.): 620 Lb (281 kg.)
 Length: 90" (2,286mm)
 Width: 32" (813mm)
 Height: 32" (813mm)



Since 1986, IDI has been a manufacturer of innovative products for surgical, interventional and diagnostic imaging.

Our product focus is in electro-mechanical solutions for fluoroscopic and digital radiographic applications.

IDI is committed to superior product design, value and customer support in everything we do.

Image Diagnostics, Inc.
310 Authority Drive
Fitchburg, Massachusetts
01420

For customer service:
sales@imagediagnostics.com
Telephone: 978.829.0009

INTELLIGENT DESIGN ► TANGIBLE OUTCOMES



ORDER: sales@imagediagnostics.com
SUPPORT: techsupport@imagediagnostics.com
WEBSITE: <https://imagediagnostics.com>

+1-978-829-0009
Monday through Friday



