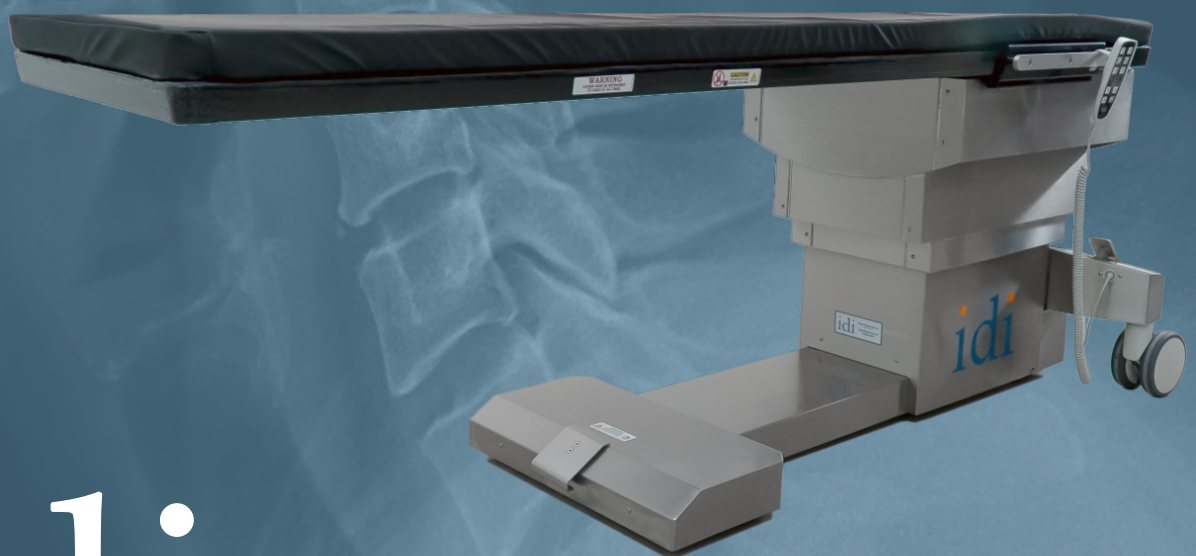
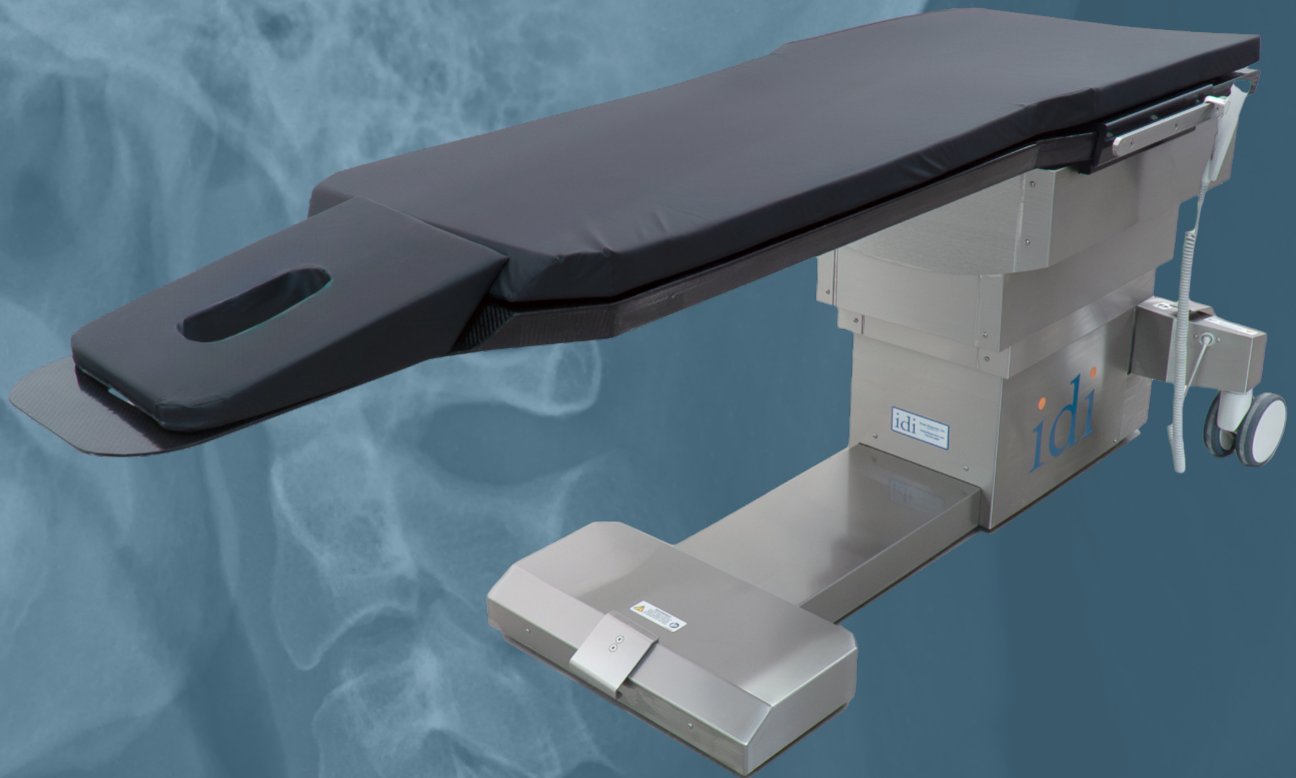


ISO-DRIVE™

*Advanced Spinal Imaging Tables
with Isocentric Roll*



idi
imagediagnostics.com

INTELLIGENT DESIGN ► **TANGIBLE OUTCOMES**

The ideal panoramic C-Arm imaging solution
for 3D spinal imaging and treatment procedures

ISO-DRIVE

Spinal Imaging Table

The Iso-Drive utilizes IDI's patented isocentric roll system to maintain spinal positioning during lateral rotation - anatomy on the iso axis remains centered in the fluoroscopic field of view.

- Cervical flexion without the use (or cost) of an artifact-producing spinal positioning system
- Unique tapered top provides lower abdominal support for large patients while improving C-arm spin clearance during 3D imaging in the upper abdominal and neck region
- Head-end utility slot provides an attachment point for arm/wrist restraint
- Over 58" (1473mm) of imaging area in a very compact platform.

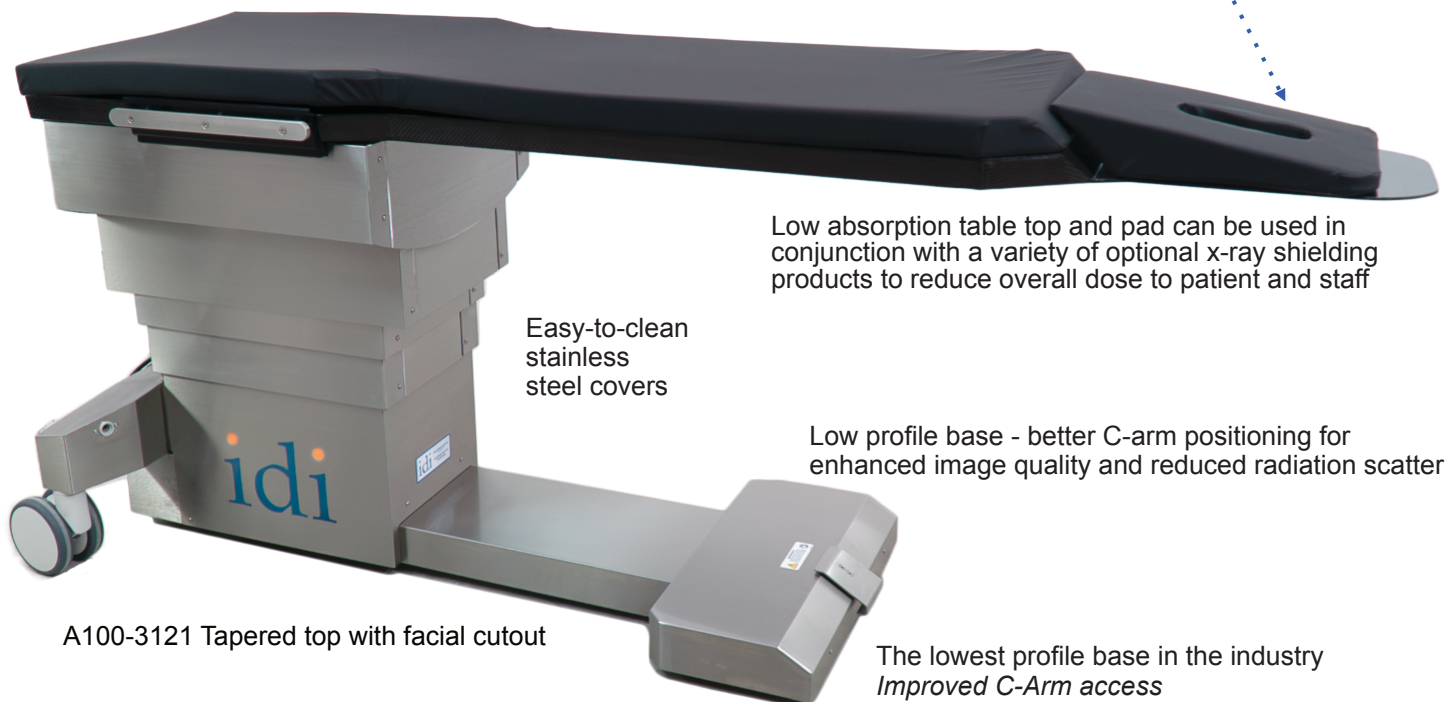
Complete table control at your fingertips

Easy-to-use pendant control with three memory positions; save and return to user defined positions with a push of a button.

One button return to boarding height or preferred position for each procedure. Save time – save money.



Offset head panel with modular head and facial supports facilitates procedural specific positioning of the spine. A variety of patient sizes and body type can also be accommodated



Low absorption table top and pad can be used in conjunction with a variety of optional x-ray shielding products to reduce overall dose to patient and staff

Easy-to-clean
stainless
steel covers

Low profile base - better C-arm positioning for
enhanced image quality and reduced radiation scatter

A100-3121 Tapered top with facial cutout

The lowest profile base in the industry
Improved C-Arm access

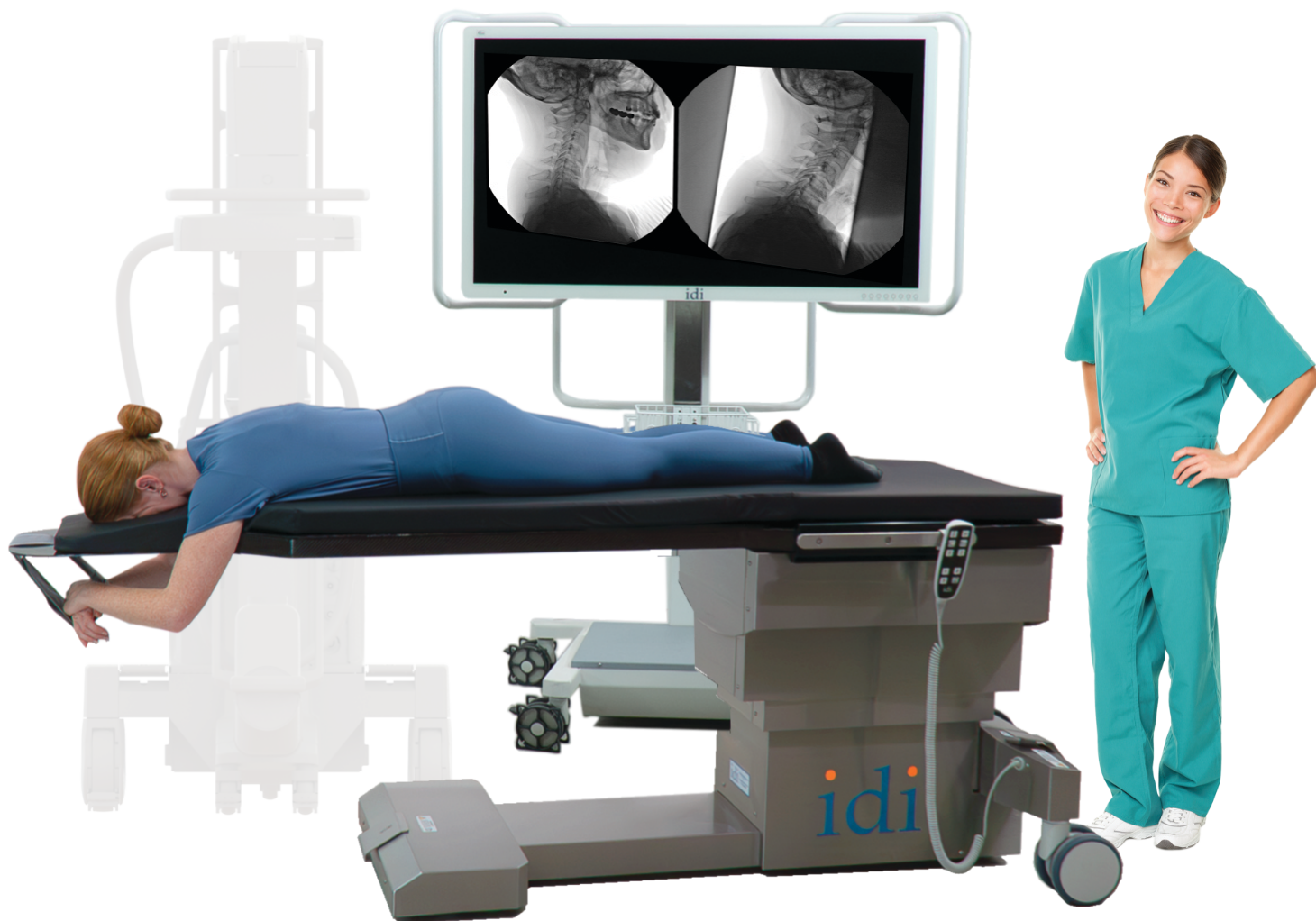


Table top design allows for increased flexion of the cervical spine for enhanced access.

Iso-Drive A100-3121 table with tapered top and facial cut out shown with
IDI's ilex D video integration system

Improve infection control

Virtually all competitive spine/pain tables have exposed telescopic aluminum columns and exposed drive actuators for each motion; or worse – a bellows system that encapsulates the column components. Exposed electro-mechanical components are virtually impossible to clean. A bellows cover may protect the internal components from fluids but presents additional cleaning challenges that are both tedious and time consuming.

The Iso-Drive table was designed with a full stainless steel wrap – no exposed actuators or aluminum lift columns. Save time and improve infection control.

From the market leader

IDI is a market leader in advanced imaging tables. IDI table long-term reliability is reflected in our comprehensive three year parts and labor warranty.

Superior imaging outcomes and anatomical access
Enhanced patient safety and comfort
Designed for low maintenance and lower life cost



±12° isocentric lateral roll

Save time - Save Money and improve patient safety during positioning

The unique geometry of the Iso-Drive table top provides for cervical flexion without the use of a spinal positioning system.

Spinal positioners are expensive accessories; time-consuming and often challenging to position with a large or heavy patient. Using the Iso-Drive table in lieu of a conventional imaging table with an optional spinal positioner will not only save money but may improve daily throughput. The unique features of the Iso-Drive help to reduce procedural time as well as improve patient safety during boarding and adjustments.

ISO-DRIVE IMAGING AREA

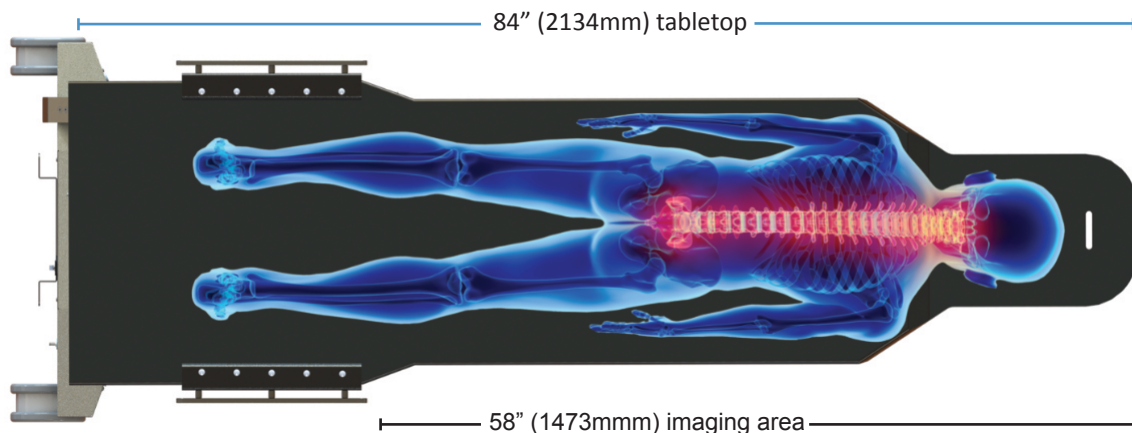


Illustration above shown with Iso-Drive Pain management tapered top table #A100-3121

Iso-Drive Table Configurations and Head Positioners



Integrated head-end slot provides a utility anchor point for strap

Arms may be restrained above or below table top



Full height filler pad for supine positioning



Multiple facial support cushions are included in the standard accessory package



Crescent face cushion



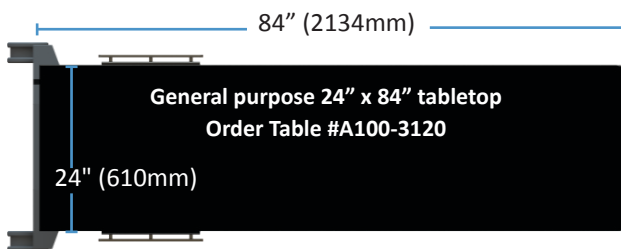
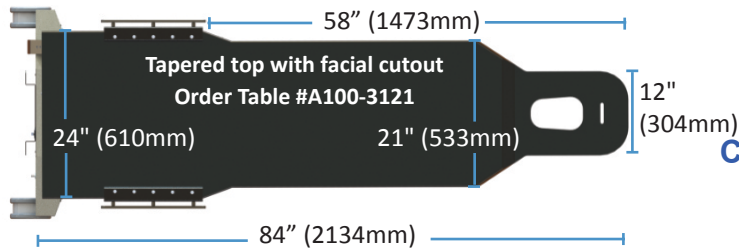
Iso-Drive's unique tapered top
(Shown without pads)



Table movements

- Trendelenburg tilt: $\pm 12^\circ$
- Isocentric lateral roll: $\pm 12^\circ$
- Table elevation: 31" - 43"
(787mm- 1092 mm) without tabletop pad
- Table elevation: 33" - 45" (838mm- 1143 mm) with tabletop pad

Choice of two table tops



Tabletop construction

- Low attenuation carbon fiber with foam core

Electrical

- Electrical power requirement: 115 / 230VAC < 10amps
- Full functionality battery backup
- 20' (6 meter) power cord

Standard accessories

- Tabletop Pad 2" thick, polyurethane foam construction
- Pendant hand control
- Patient Restraint Straps (2)

Weight

- Patient weight capacity: 600 lbs. (272 kg)
- Table weight: 620 lbs. (281 kg)

Warranty

- Three year parts and one year labor*

Certifications

- IEC 60601-1:2005 Ed.3+A1;C1:2014, IEC 60601-1-2 4th edition
- IEC 60601-2-46 Ed.2, IEC 62366 Ed 1.1
- AAMI ES60601-1:2005+A1
- CSA C22.2 #60601-1:2014 Ed.3

Key benefits

	IDI	The Competition
600 pound capacity	Standard	X
Isocentric roll	Standard	X
Fully enclosed base	Standard	X
Pedal locking	Standard	X
Offset head section	Standard	X
Modular head cushions	Standard	X
Battery backup	Standard	?

