

100-4

Interventional / Endovascular Imaging Table

*Now with wireless controls
600 lb. patient weight capacity*

The ideal office solution

The IDI 100-4 imaging table provides effortless float; panning and motion control are at your fingertips.



The smart choice

Capabilities: 600 pound patient table capacity combined with 68" of imaging area.

Functionality: Low base and extended elevation range – designed for flat panel imaging

Reliability: No hydraulics - no oil leaks, no pneumatics - no compressor service

Versatility: Instantly switch between A/C and battery backup

idi
imagediagnostics.com

INTELLIGENT DESIGN ► TANGIBLE OUTCOMES

100-4

Provides surgical articulation in a four-way manual float table

Image Diagnostics' 100-4 represents the ideal balance between performance and price. In the OR and office-based labs the 100-4 is the preferred imaging solution during GI, interventional and vascular procedures.

The 100-4 delivers 32" of longitudinal float in a very compact platform. Table positioning in smaller rooms is enhanced while comprehensive anatomical coverage can easily be accomplished without any C-arm movement.

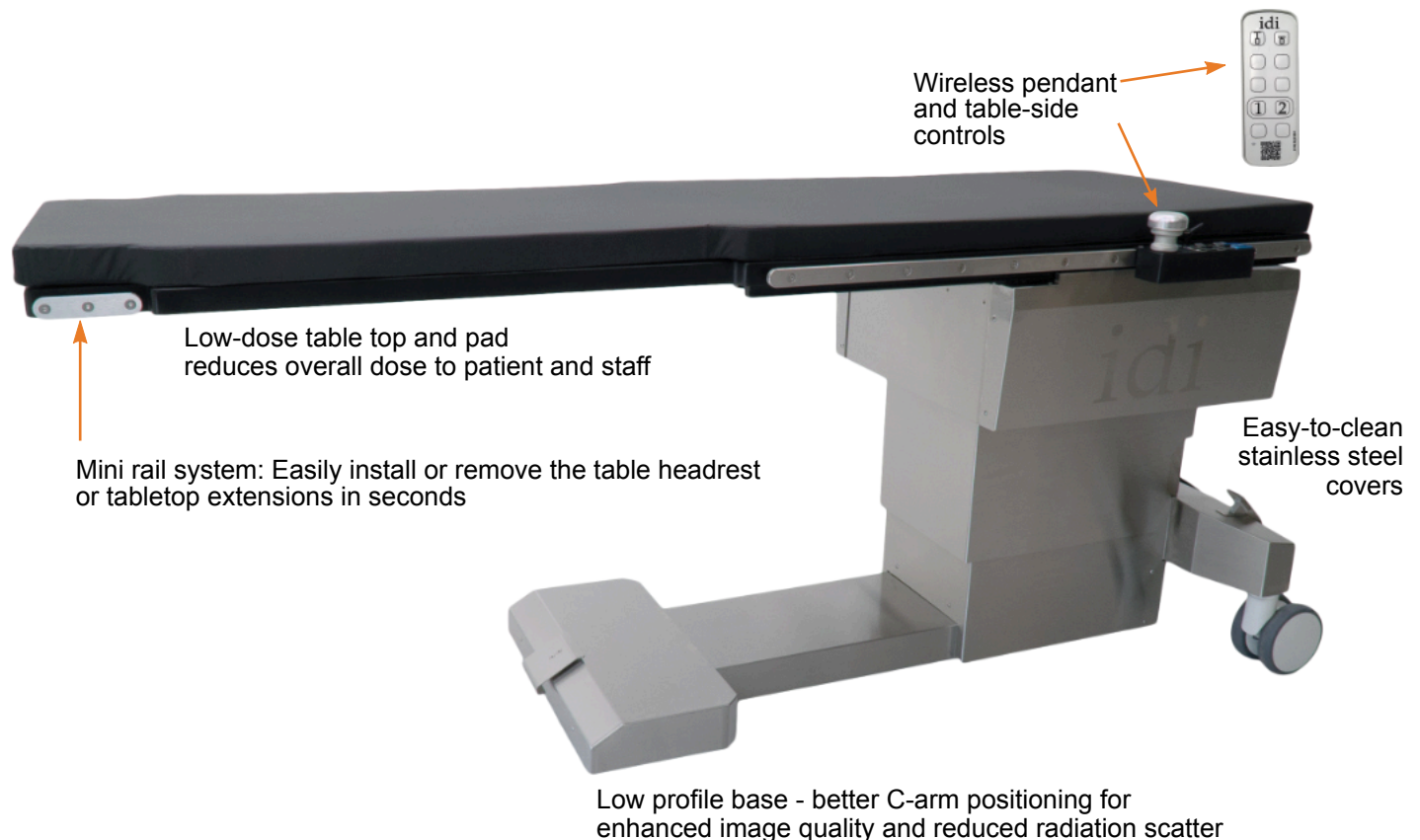


Complete wireless table control at your fingertips

Panning and motorized functions combined into one easy to use wireless control handle

No need to switch between a pendant and panning control!

The standard 84" top provides 68" of imaging area. When equipped with the optional head rest or peripheral extension, the imaging area increases to 80" – allowing head-to-toe imaging on a 6' 8" patient. A high-quality carbon fiber tabletop and 2" thick tabletop pad deliver minimal total x-ray attenuation.



100-4

Standard Tabletop

100-4 #A100-3247
(U.S. Accessory Rails)

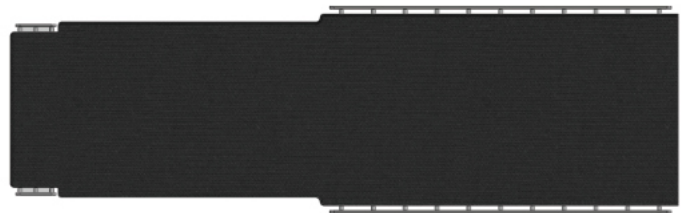
100-4 #A100-3296
(Metric Accessory Rails)

The standard tabletop 24"x 22"x 19.5"x 84" with mini-rails provides 68" of imaging area. When equipped with the optional head rest or peripheral extension, the imaging area increases to 80 inches, allowing head-to-toe imaging on a 6' 8" patient.

A high-quality carbon fiber tabletop and 2" thick tabletop pad deliver minimal total x-ray attenuation.



Ask about radiation shielding options



G.I. Width Tabletop

100-4 #A100-3892
(U.S. Accessory Rails)

100-4 #A100-3893
(Metric Accessory Rails)

The G.I. width 24" x 84" rectangular tabletop provides an expanded surface for larger patients in GI and and specialized imaging applications. The table includes full length integrated side rails for accessory mounting and one table width extender.

The high-quality carbon fiber tabletop and 2" thick tabletop pad delivers minimal total x-ray attenuation.



Above: Single Width Extension



100-4



100-4 standard tabletop shown with IDI's ilex video integration system



100-4 standard tabletop with optional headrest extension

- **Safety and functionality** - Lock out motorized functions without losing panning ability. Accidental release of the panning control is prevented by an intuitive handle release design.
- **Extension and Imaging**- A mini-rail system allows for the installation of extensions and accessories in seconds.
- **Reliability and simplicity of design** - IDI is a market leader in advanced vascular imaging tables. Long-term reliability is reflected in our comprehensive three year parts and labor warranty.

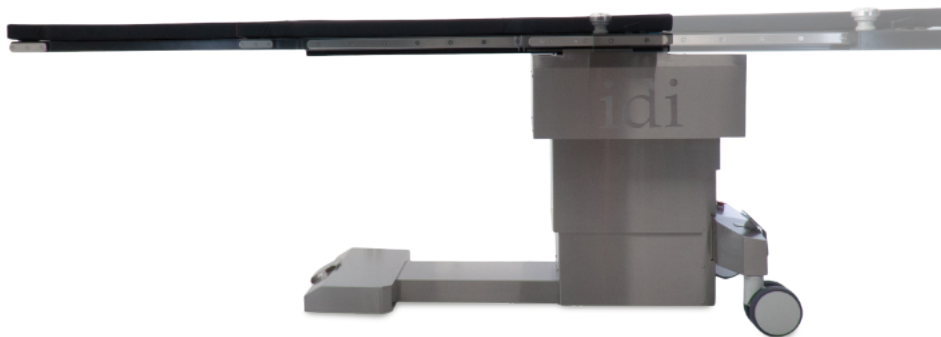
100-4 Table Motions



Motorized Elevation: 13"



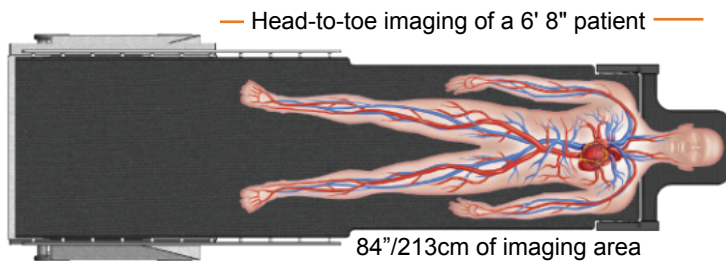
Transverse float 8"



Longitudinal float 32"

100-4 Table Assets

Standard tabletop shown with optional head extension



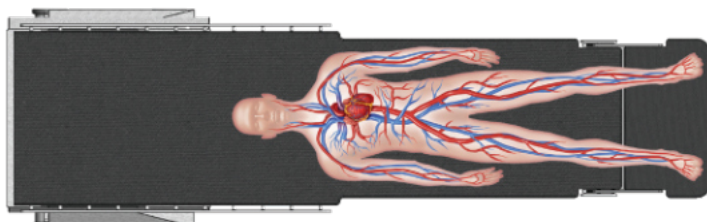
— Head-to-toe imaging of a 6' 8" patient —

84"/213cm of imaging area

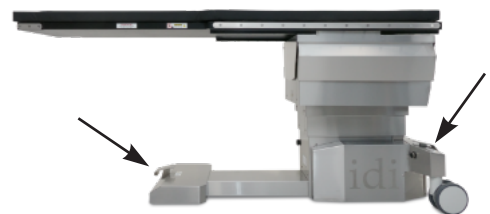


Wireless table-side and pendant hand controls

Standard tabletop shown with optional peripheral extension



Very large radiolucent imaging area. Low AL equivalency carbon fiber top for maximum safety to patient and staff.



Front directional lock and rear table lock for easy positioning and transport (without patient).

100-4 Optional Accessories



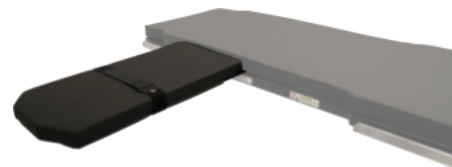
Headrest extension

Articulating carbon fiber headrest. Attaches to the imaging end of the standard tabletop.



Clamp-on Accessory Rail

For attaching accessories to the tabletop. Rail is 8 1/2" long x 3/8" thick x 1-1/8" high.



VAB Armboard

Carbon fiber, one-piece, extra wide arm board for vascular access procedures such as fistula applications.



Arm board

Quick-release, rail mounted. Requires clamp-on accessory rail if mounting to section of tabletop without accessory rails.



IV Pole

Stainless steel with four bottle hooks. Range: 1070 -1660 mm. Tube diameter: 25 / 18 mm. IV Pole includes rail clamp.



Tabletop Catheter Tray Extension

24" wide. Mounts to pedestal end of table only. Maximum weight this extension can support is 20 lbs. or 9 kgs.



Tabletop Catheter Tray Extension for lower peripheral procedures

21" wide, mounts to imaging end of table only. The maximum weight this extension can support is 20 lbs. or 9 kgs.



Radiation Shield

0.5mm lead equivalent. Articulating, rail-mounted. Attaches to table side-rail at base end of table, either side, adjustable. Articulating joint allows shield to conform to table contour.



Anesthesia Screen Holder

Flexible "hoop" style can be mounted to standard accessory rails with optional rotating side clamps (required) or directly mounted to the A100-2317 Headrest Extension.



Peripheral Extension

Carbon fiber extension, mounts to the imaging end of table only. 22" wide. Maximum weight for this extension is 25 lbs or 11.4 kgs.



Side-rail clamp

Rotating, with socket for attachment of accessories with 5/8 inch circular post.



Table Width Extension

Attaches to 100-4 G.I. width tabletop side rail. 4" x 20". One included with G.I. width tabletop.

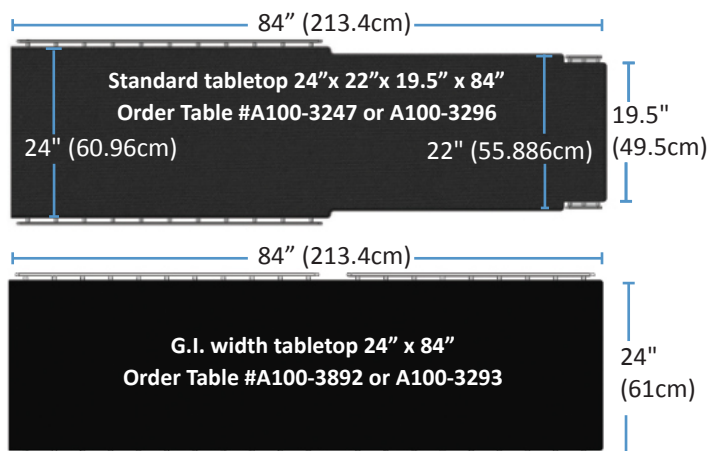
100-4 Specifications

Table movements

- Longitudinal tabletop travel: 32" (81.3 cm)
- Transverse tabletop travel: 8" (20.3 cm)
- Table elevation: 30" - 43" (76 -109 cm) without tabletop pad. 32" - 45" (81 - 114 cm) with pad

Choice of two tabletops

- **Standard tabletop 24"x 22"x 19.5"x 84"**
With U.S accessory rails #A100-3247
With metric accessory rails #A100-3296
- **G.I. width tabletop 24"x 84"**
With U.S. accessory rails #A100-3892
With metric accessory rails #A100-3893
- Construction: Low attenuation carbon fiber with foam core.



Electrical

- Power requirements: 115/230VAC < 6 amps
- Full temporary table operation in battery backup mode
- LED power status indicator
- 20' (6 meter) power cord

Standard accessories

- Tabletop pad 2" thick, polyurethane foam construction
- Wireless panning hand control, rail-mounted
- Wireless pendant hand control
- Patient restraint straps
 - Standard tabletop: 2 straps
 - G.I. Width tabletop: 1 strap with pad and rail

Capacity / Table Weight

- Patient weight capacity: 600 lbs. (272 kg) without tabletop extensions
- Patient weight capacity: 500 lbs. (226 kg) with tabletop extensions
- Table weight: 635 lbs. (288 kg)

Certifications

- IEC 60601-1:2005 Ed.3+A1;C1:2014,
- IEC 60601-1-2 4th edition
- IEC 60601-2-46 Ed.2, IEC 62366 Ed 1.1
- AAMI ES60601-1:2005+A1
- CSA C22.2 #60601-1:2014 Ed.3

Warranty

- Three years parts, three years labor*

