

100UC+ UROLOGY TABLE

Motorized elevation, trendelenburg tilt and 4-way tabletop movement



Lightweight aluminum boarding extension.
An optional carbon fiber imaging extension is available.



Trendelenburg: $\pm 12^\circ$



Longitudinal tabletop travel: 13.75"

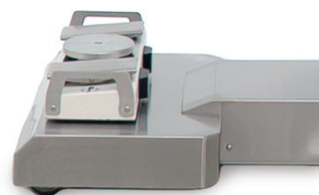


Transverse travel: $\pm 3.5"$, 7" total

Standard Features



Metal-free perineal end of table: Unobstructed imaging to the edge of the tabletop.



Onboard dedicated footswitch storage



Collapsible drain bag hoop



Removable lead-vinyl x-ray shield



Wireless footswitch and pendant hand control



Quick-release armboard

100UC+ UROLOGY TABLE

Specifications

Image Diagnostics

Since 1986, IDI has been a manufacturer of innovative products for surgical, interventional and diagnostic imaging.

Our product focus is in electro-mechanical solutions for fluoroscopic and digital radiographic applications.

IDI is committed to superior product design, value and customer support in everything we do.

Components, and Features:

- Imaging area, main tabletop: 23" W x 29" L (58cm x 73cm)
- Metal-free perineal end of tabletop for unobstructed imaging access
- Imaging area, with optional carbon fiber tabletop extension: 23" W x 64" L (58cm x 162 cm)
- Lightweight aluminum boarding extension: 28"W x 32"L (71cm x 81 cm)
- Includes 2" (5 cm) thick memory foam table pads
- Onboard footswitch storage
- Standard US side-rails for accessory attachments on main tabletop
- Locking rear swivel casters, 6" (15.2cm)

Table dimensions and movement:

- Low X-ray attenuation carbon fiber tabletop 28"W x 46.5"L (71cm x 118 cm)
- Motorized motions via wireless foot switch and hand control pendant
- Elevation: 29.25" - 41" (74cm - 104 cm)
- Trendelenburg Tilt: $\pm 12^\circ$
- Longitudinal tabletop travel: 13.75" (35cm)
- Transverse tabletop travel: $\pm 3.5"$, 7" total (± 8.9 cm, 17.8cm total)

Table patient weight capacity:

- With patient upper body on main tabletop: 550 lbs.(249 kg)
- With patient upper body on optional radiolucent extension: 350 lbs. (158kg)
- Boarding extension only (A100-3543): 75 lbs. (34kg)
- Optional radiolucent imaging extension only (A100-1400): 200 lbs. (90kg)

Electrical:

- 120 Vac, 60Hz operation or 230 VAC, 50Hz. <10 amp at 120VAC

Table & Extension Weight:

- Table: ~724 lbs. (~330kg)
- Aluminum Tabletop Extension: 15 lbs. (6.8kg)

Accessories included:

- Tabletop Pad, 2" thick
- Aluminum boarding extension, with 2" thick pad
- Wireless hand control pendant & footswitch control
- Removable drain bag support hoop
- Disposable drain bag and hose, box of 20
- Removable radiation shield flap for perineal end of table
- Patient restraint straps (2)
- Armboard, rail mounted, with pad and strap
- Disposable covers for footswitch, box of 50

Optional Accessories (not included in standard accessory package):

- Boot-style "ComfortFin" Stirrups with pneumatic-assist adjustment.
- Carbon Fiber Imaging Extension

Note: Table is compatible with accessories that have a standard US side-rail attachment.

100UC+ UROLOGY TABLE



Some accessories shown are optional



ORDER: Sales@ImageDiagnostics.com
SUPPORT: TechSupport@ImageDiagnostics.com
WEBSITE: ImageDiagnostics.com

+1-978-829-0009
Monday through Friday
8am to 5pm, Eastern



L100-4116 Rev. A



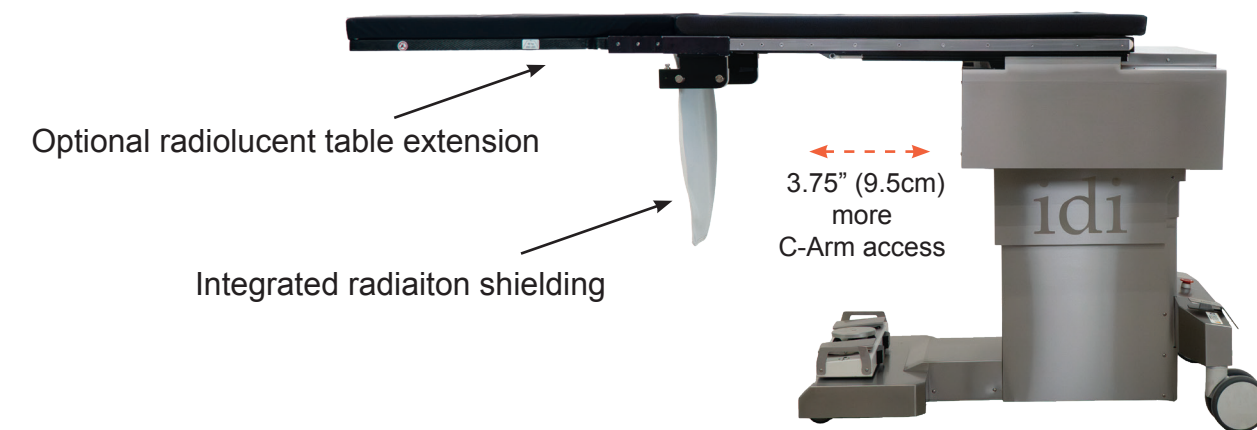
INTELLIGENT DESIGN ► TANGIBLE OUTCOMES

100UC+ UROLOGY TABLE

Key Features

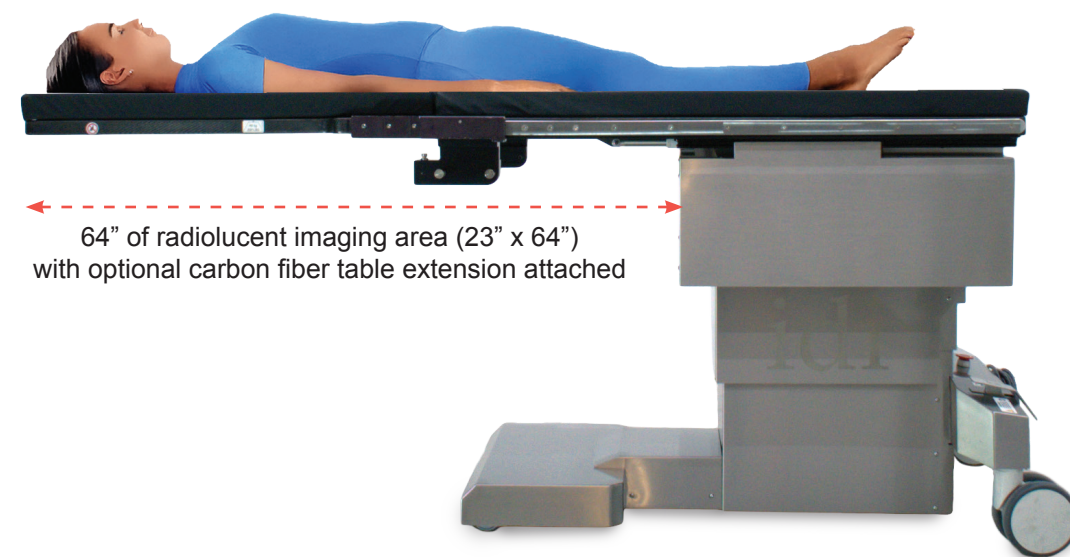
The 100UC+ mobile urology table combines the benefits of fixed tables with improved accessibility for larger patients and advanced imaging capabilities, making it a versatile solution for urological procedures.

- Mobile Platform: Provides the functionality of a fixed table with portability
- Enhanced Patient Capacity: 550 pounds (250 kg)
- Ample C-Arm access
- Tabletop width: 28 inches (71 cm)
- Extensive imaging area allows for comprehensive anatomical visualization

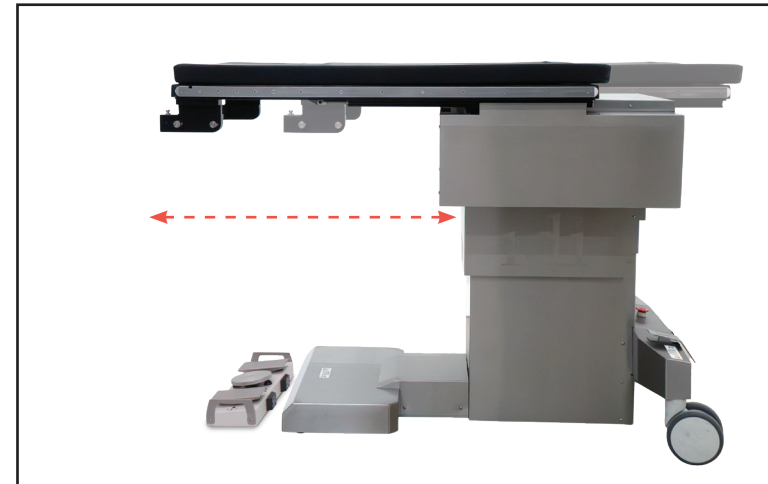


Clinical Versatility and Multipurpose use

Urological accessories are easily removable so the table can be quickly configured for multi-purpose C-arm imaging or general patient positioning for non-urological procedures.



Shown with optional 24" x 34" carbon fiber imaging extension: 350 lb. (159 kg) patient weight capacity with patient upper body on optional carbon fiber extension



9 inch (22.8cm) longer imaging area than before.
Adds 3.75" (9.5cm) of longitudinal travel.



The new table design allows ample room for clutter-free placement of table and fluoro footswitches.



Increased Weight Capacity
550 pounds (249 kg)

100UC+ Improvements



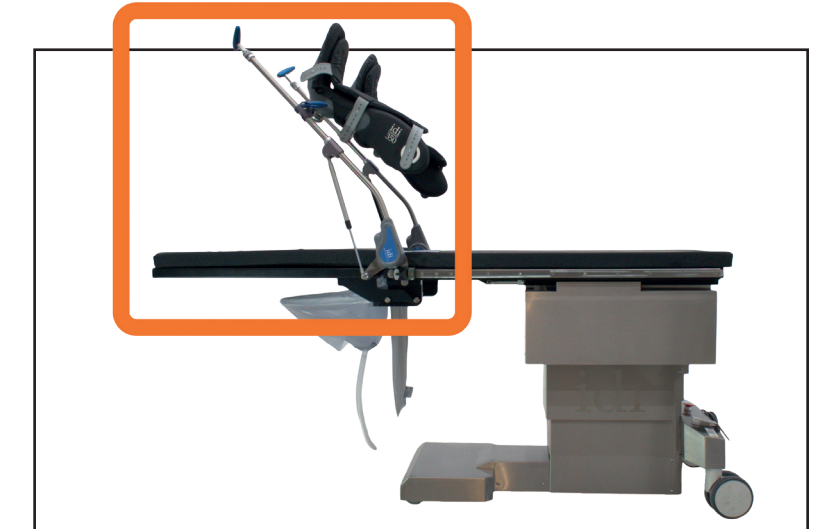
Bluetooth hand pendant and foot switch controls offering physicians more flexibility in table operation.



Elevation Low: 29.25" High 41" (74cm – 104cm)



Resistant to rust and corrosion, the non-porous surface prevents bacterial growth.



The stirrups and leg board extension can be mounted at the same time, streamlining patient loading.



Save a preferred tabletop position using the "position save" button on the pendant hand control.



A 2-inch thick, waterproof pad designed to enhance patient comfort, hygiene and durability.